



ELECTRONIC COPY

LG702570754
Report verification at igi.org



May 12, 2025

IGI Report Number **LG702570754**

Description **LABORATORY GROWN DIAMOND**

Shape and Cutting Style **MARQUISE BRILLIANT**

Measurements **24.28 X 12.00 X 6.90 MM**

GRADING RESULTS

Carat Weight **11.55 CARATS**

Color Grade **F**

Clarity Grade **VVS 2**

LABORATORY GROWN DIAMOND REPORT

May 12, 2025

IGI Report Number **LG702570754**

Description **LABORATORY GROWN DIAMOND**

Shape and Cutting Style **MARQUISE BRILLIANT**

Measurements **24.28 X 12.00 X 6.90 MM**

GRADING RESULTS

Carat Weight **11.55 CARATS**

Color Grade **F**

Clarity Grade **VVS 2**

ADDITIONAL GRADING INFORMATION

Polish **EXCELLENT**

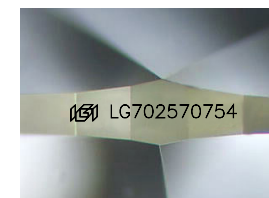
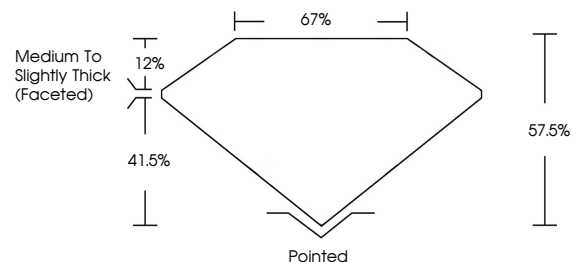
Symmetry **EXCELLENT**

Fluorescence **NONE**

Inscription(s) **IGI LG702570754**

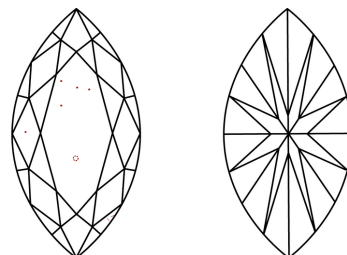
Comments: This Laboratory Grown Diamond was created by Chemical Vapor Deposition (CVD) growth process.
Type IIa

PROPORTIONS



Sample Image Used

CLARITY CHARACTERISTICS



KEY TO SYMBOLS

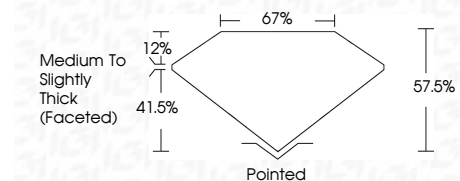
Red symbols indicate internal characteristics.
Green symbols indicate external characteristics.

COLOR

D E F G H I J Faint Very Light Light

CLARITY

IF	VS ¹⁻²	VS ¹⁻²	SI ¹⁻²	I ¹⁻³
Internally Flawless	Very Very Slightly Included	Very Slightly Included	Slightly Included	Included



ADDITIONAL GRADING INFORMATION

Polish **EXCELLENT**

Symmetry **EXCELLENT**

Fluorescence **NONE**

Inscription(s) **IGI LG702570754**

Comments: This Laboratory Grown Diamond was created by Chemical Vapor Deposition (CVD) growth process.
Type IIa



IGI



May 12, 2025
IGI Report No LG702570754
MARQUISE BRILLIANT
24.28 X 12.00 X 6.90 MM
11.55 CARATS
F
Carat Weight
Color Grade
VVS 2
57.5%
67%
Depth
Table
Girdle
Medium to Slightly Thick (Faceted)
Pointed
Culet
EXCELLENT
EXCELLENT
NONE
NONE
IGI LG702570754
Inscription(s)
Comments: This Laboratory Grown Diamond was created by Chemical Vapor Deposition (CVD) growth process.
Type IIa