



ELECTRONIC COPY

LG702570026 Report verification at igi.org



May 2, 2025 IGI Report Number LG702570026 Description LABORATORY GROWN DIAMOND Shape and Cutting Style ROUND BRILLIANT Measurements 10.26 - 10.33 X 6.20 MM GRADING RESULTS Carat Weight 4.05 CARATS Color Grade E Clarity Grade VVS 2 Cut Grade IDEAL

May 2, 2025 IGI Report Number LG702570026 Description LABORATORY GROWN DIAMOND Shape and Cutting Style ROUND BRILLIANT Measurements 10.26 - 10.33 X 6.20 MM

GRADING RESULTS

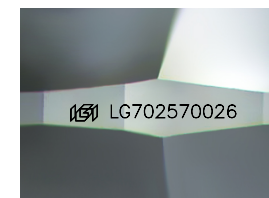
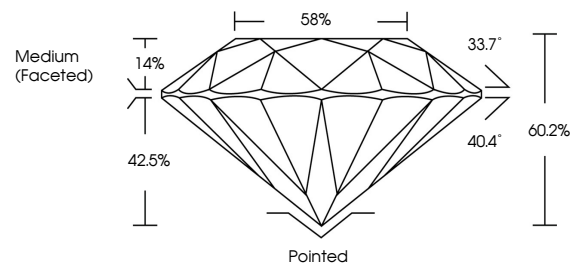
Carat Weight 4.05 CARATS Color Grade E Clarity Grade VVS 2 Cut Grade IDEAL

ADDITIONAL GRADING INFORMATION

Polish EXCELLENT Symmetry EXCELLENT Fluorescence NONE Inscription(s) IGI LG702570026

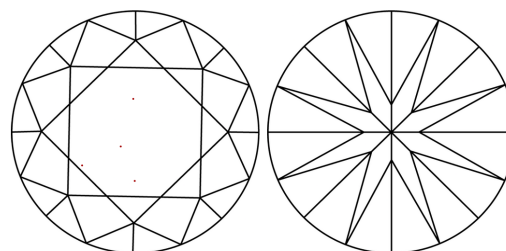
Comments: This Laboratory Grown Diamond was created by Chemical Vapor Deposition (CVD) growth process. Type IIa

PROPORTIONS



Sample Image Used

CLARITY CHARACTERISTICS



KEY TO SYMBOLS

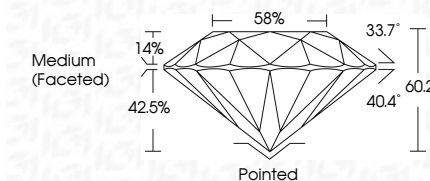
Red symbols indicate internal characteristics. Green symbols indicate external characteristics.

COLOR

D E F G H I J Faint Very Light Light

CLARITY

IF WS 1-2 VS 1-2 SI 1-2 I 1-3 Internally Flawless Very Very Slightly Included Very Slightly Included Slightly Included Included



ADDITIONAL GRADING INFORMATION

Polish EXCELLENT Symmetry EXCELLENT Fluorescence NONE Inscription(s) IGI LG702570026 Comments: This Laboratory Grown Diamond was created by Chemical Vapor Deposition (CVD) growth process. Type IIa



IGI



May 2, 2025 IGI Report No LG702570026 ROUND BRILLIANT 10.26 - 10.33 X 6.20 MM 4.05 CARATS E Color Grade VVS 2 IDEAL 60.2% 58% Medium (Faceted) Pointed EXCELLENT EXCELLENT NONE NONE IGI LG702570026 Comments: This Laboratory Grown Diamond was created by Chemical Vapor Deposition (CVD) growth process. Type IIa