



ELECTRONIC COPY

LG702558384
Report verification at igi.org



May 5, 2025

IGI Report Number **LG702558384**

Description **LABORATORY GROWN DIAMOND**

Shape and Cutting Style **ROUND BRILLIANT**

Measurements **13.35 - 13.41 X 8.29 MM**

GRADING RESULTS

Carat Weight **9.13 CARATS**

Color Grade **F**

Clarity Grade **VS 1**

Cut Grade **IDEAL**

May 5, 2025
IGI Report Number **LG702558384**
Description **LABORATORY GROWN DIAMOND**
Shape and Cutting Style **ROUND BRILLIANT**
Measurements **13.35 - 13.41 X 8.29 MM**

GRADING RESULTS

Carat Weight **9.13 CARATS**

Color Grade **F**

Clarity Grade **VS 1**

Cut Grade **IDEAL**

ADDITIONAL GRADING INFORMATION

Polish **EXCELLENT**

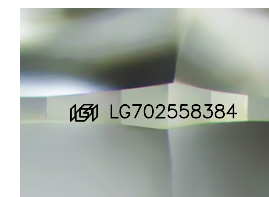
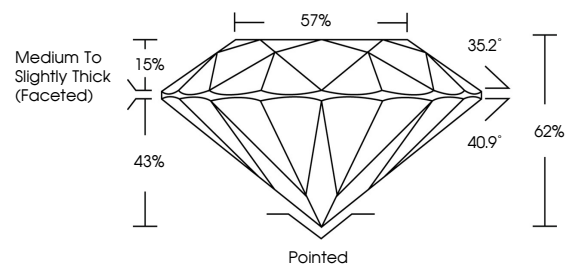
Symmetry **EXCELLENT**

Fluorescence **NONE**

Inscription(s) **LG702558384**

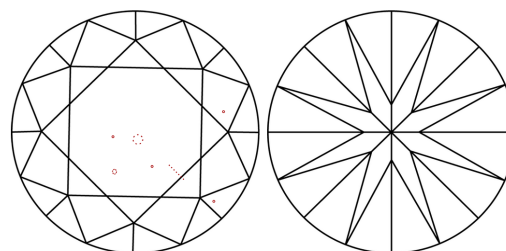
Comments: HEARTS & ARROWS
This Laboratory Grown Diamond was created by
Chemical Vapor Deposition (CVD) growth process.
Type IIa

PROPORTIONS



Sample Image Used

CLARITY CHARACTERISTICS



KEY TO SYMBOLS

Red symbols indicate internal characteristics.
Green symbols indicate external characteristics.



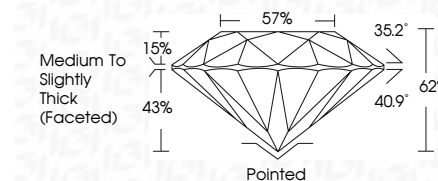
COLOR

D E F G H I J Faint Very Light Light

CLARITY

IF VS¹⁻² VS¹⁻² SI¹⁻² I¹⁻³

Internally Flawless Very Very Slightly Included Very Slightly Included Slightly Included Included



ADDITIONAL GRADING INFORMATION

Polish **EXCELLENT**

Symmetry **EXCELLENT**

Fluorescence **NONE**

Inscription(s) **LG702558384**

Comments: HEARTS & ARROWS
This Laboratory Grown Diamond was created by
Chemical Vapor Deposition (CVD) growth process.
Type IIa



May 5, 2025
IGI Report No LG702558384
ROUND BRILLIANT

13.35 - 13.41 X 8.29 MM
9.13 CARATS
F
VS 1
IDEAL
62%
57%
Medium To Slightly Thick (Faceted)

Pointed
EXCELLENT
EXCELLENT
NONE
NONE
IGI LG702558384

Cutler
Polish
Symmetry
Fluorescence
Inscriptions(s)

Comments:
Hearts & Arrows
This Lab Grown Diamond was
created by Chemical Vapor Deposition
(CVD) growth process.
Type IIa