

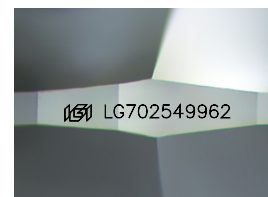
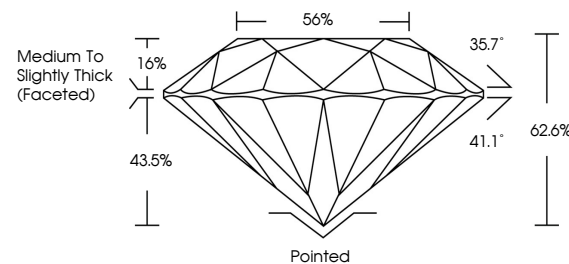


ELECTRONIC COPY

LABORATORY GROWN DIAMOND REPORT

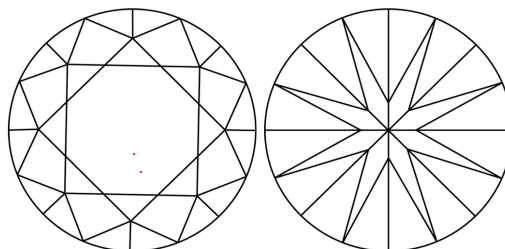
LG702549962
Report verification at igi.org

PROPORTIONS



Sample Image Used

CLARITY CHARACTERISTICS



KEY TO SYMBOLS

Red symbols indicate internal characteristics.
Green symbols indicate external characteristics.

COLOR

D E F G H I J Faint Very Light Light

CLARITY

IF WS¹⁻² VS¹⁻² SI¹⁻² |¹⁻³

Internally Flawless	Very Very Slightly Included	Very Slightly Included	Slightly Included	Included
------------------------	--------------------------------	---------------------------	----------------------	----------



© IGI 2020, International Gemological Institute

FD - 10 20

www.igi.org

LABORATORY GROWN DIAMOND REPORT



April 25, 2025

IGI Report Number **LG702549962**Description **LABORATORY GROWN DIAMOND**Shape and Cutting Style **ROUND BRILLIANT**

Measurements 7.16 - 7.20 X 4.50 MM

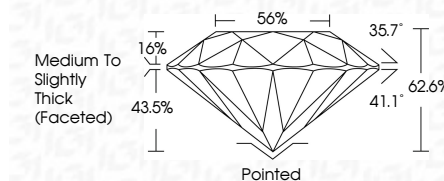
GRADING RESULTS

Carat Weight 1.41 CARAT

Color Grade D

Clarity Grade **VS 2**

Cut Grade **EXCELLENT**



ADDITIONAL GRADING INFORMATION

Polish **EXCELLENT**Symmetry **EXCELLENT**Fluorescence **NONE**Inscription(s) LG702549962

Comments: This Laboratory Grown Diamond was created by Chemical Vapor Deposition (CVD) growth process.
Type IIa



April 26, 2025	Carat Weight	1.41 CARAT
G Report No. LG7025499X2	Color Grade	D
ROUND BRILLIANT	Clarity Grade	VS 2
	Depth	EXCELLENT
	Table	62.6%
	Girdle	56%
	Medium to Slightly Thick (rounded)	
	Culet	Pointed
	Polish	EXCELLENT
	Symmetry	EXCELLENT
	Fluorescence	NONE
	Inscriptions(s)	169 1G7025499X2
	Comments:	
		The Laboratory Grown Diamond was created by Chemical Vapor Deposition (CVD) growth process.
		Type IIA