

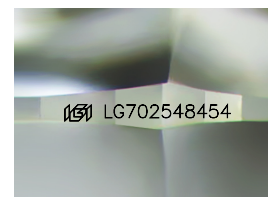
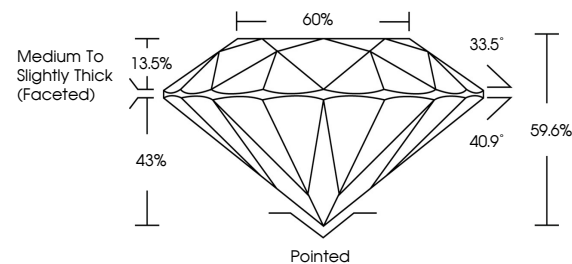


ELECTRONIC COPY

LABORATORY GROWN DIAMOND REPORT

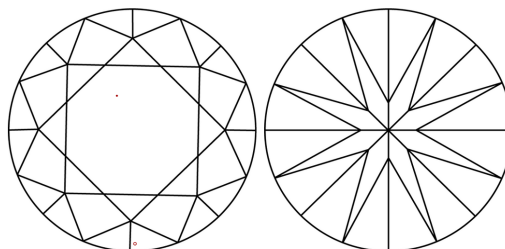
LG702548454
Report verification at igi.org

PROPORTIONS



Sample Image Used

CLARITY CHARACTERISTICS



KEY TO SYMBOLS

Red symbols indicate internal characteristics.
Green symbols indicate external characteristics.

COLOR

D E F G H I J Faint Very Light Light

CLARITY

IF WS¹⁻² VS¹⁻² SI¹⁻² |¹⁻³

Internally Flawless	Very Very Slightly Included	Very Slightly Included	Slightly Included	Included
------------------------	--------------------------------	---------------------------	----------------------	----------

LABORATORY GROWN DIAMOND REPORT



April 26, 2025

IGI Report Number **LG702548454**Description **LABORATORY GROWN DIAMOND**Shape and Cutting Style **ROUND BRILLIANT**

Measurements 9.41 - 9.43 X 5.61 MM

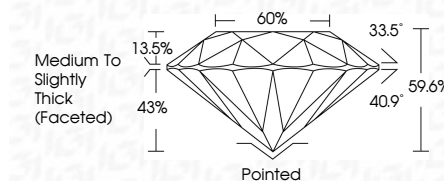
GRADING RESULTS

Carat Weight **3.03 CARATS**

Color Grade **E**

Clarity Grade VS 1

Cut Grade **IDEAL**



ADDITIONAL GRADING INFORMATION

Polish **EXCELLENT**Symmetry **EXCELLENT**Fluorescence NONInscription(s) 151 LG702548454

Comments: This Laboratory Grown Diamond was created by Chemical Vapor Deposition (CVD) growth process.
Type IIa



© IGI 2020, International Gemological Institute

FD - 10 20

www.igi.org



THIS DOCUMENT WAS PRODUCED WITH THE FOLLOWING SECURITY MEASURES: SPECIAL DOCUMENT PAPER, INK SCREENS, WATERMARK, BACKGROUND DESIGNS, HOLOGRAM AND OTHER SECURITY FEATURES NOT LISTED AND DO EXCEED DOCUMENT SECURITY INDUSTRY GUIDELINE

April 26, 2025
ICI Report No LG702548454
ROUND BRILLIANT

	9.91 - 9.43 X 5.61 MM		3.03 CARATS	
	Carat Weight	Color Grade	E	
	Claify Grade	Cut Grade	VS 1	
	Depth	Table	IDEAL	
	Girdle	Culet	59.6%	
		Symmetry	60%	
	Fluorescence		Medium to Slightly Thick (Faceted)	
			Pointed	
			EXCELLENT	
			EXCELLENT	
			NONE	

Comments:
This Laboratory Grown Diamond was
created by Chemical Vapor Deposition
(CVD) growth process.