



ELECTRONIC COPY

LG702547534
Report verification at igi.org



May 1, 2025

IGI Report Number **LG702547534**

Description **LABORATORY GROWN DIAMOND**

Shape and Cutting Style **ROUND BRILLIANT**

Measurements **11.07 - 11.11 X 6.63 MM**

GRADING RESULTS

Carat Weight **5.04 CARATS**

Color Grade **F**

Clarity Grade **VVS 2**

Cut Grade **IDEAL**

May 1, 2025

IGI Report Number **LG702547534**

Description **LABORATORY GROWN DIAMOND**

Shape and Cutting Style **ROUND BRILLIANT**

Measurements **11.07 - 11.11 X 6.63 MM**

GRADING RESULTS

Carat Weight **5.04 CARATS**

Color Grade **F**

Clarity Grade **VVS 2**

Cut Grade **IDEAL**

ADDITIONAL GRADING INFORMATION

Polish **EXCELLENT**

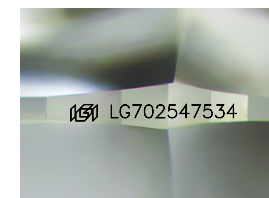
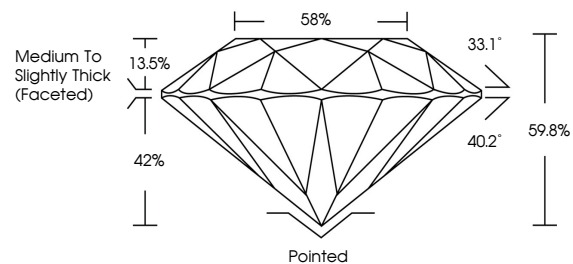
Symmetry **EXCELLENT**

Fluorescence **NONE**

Inscription(s) **IGI LG702547534**

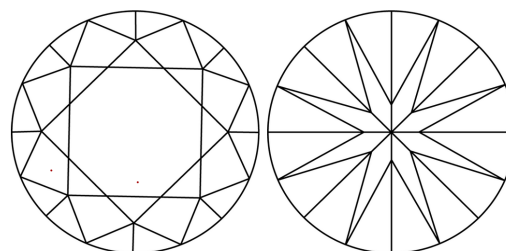
Comments: This Laboratory Grown Diamond was created by Chemical Vapor Deposition (CVD) growth process. Type IIa

PROPORTIONS



Sample Image Used

CLARITY CHARACTERISTICS



KEY TO SYMBOLS

Red symbols indicate internal characteristics.
Green symbols indicate external characteristics.

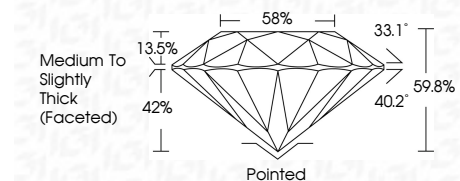
COLOR

D E F G H I J Faint Very Light Light

CLARITY

IF VS¹⁻² VS¹⁻² SI¹⁻² I¹⁻³

Internally Flawless Very Very Slightly Included Very Slightly Included Slightly Included Included



ADDITIONAL GRADING INFORMATION

Polish **EXCELLENT**

Symmetry **EXCELLENT**

Fluorescence **NONE**

Inscription(s) **IGI LG702547534**

Comments: This Laboratory Grown Diamond was created by Chemical Vapor Deposition (CVD) growth process. Type IIa



IGI



May 1, 2025
IGI Report No LG702547534
ROUND BRILLIANT

5.04 CARATS
F

11.07 - 11.11 X 6.63 MM

Color Grade
Clarity Grade
Depth
Table
Girdle

VVS 2
IDEAL
59.8%
58%

Medium To Slightly Thick (Faceted)

Culet
Polish
Symmetry
Fluorescence
Inscription(s)

Pointed
EXCELLENT
EXCELLENT
NONE
IGI LG702547534

Comments: This Laboratory Grown Diamond was created by Chemical Vapor Deposition (CVD) growth process. Type IIa