



ELECTRONIC COPY

LG702546173
Report verification at igi.org



May 7, 2025

IGI Report Number **LG702546173**

Description **LABORATORY GROWN DIAMOND**

Shape and Cutting Style **SQUARE EMERALD CUT**

Measurements **6.91 X 6.82 X 4.74 MM**

GRADING RESULTS

Carat Weight **2.08 CARATS**

Color Grade **FANCY INTENSE PINK**

Clarity Grade **VS 1**

May 7, 2025
IGI Report Number **LG702546173**
Description **LABORATORY GROWN DIAMOND**
Shape and Cutting Style **SQUARE EMERALD CUT**
Measurements **6.91 X 6.82 X 4.74 MM**

GRADING RESULTS

Carat Weight **2.08 CARATS**

Color Grade **FANCY INTENSE PINK**

Clarity Grade **VS 1**

ADDITIONAL GRADING INFORMATION

Polish **EXCELLENT**

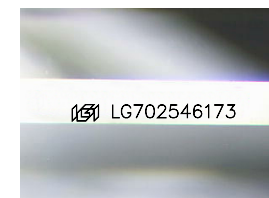
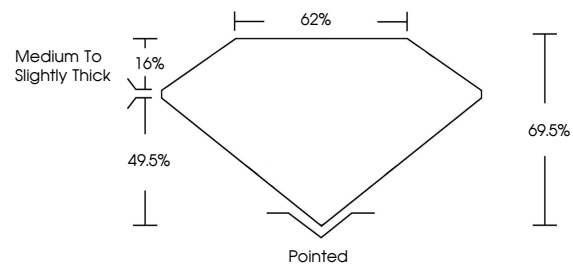
Symmetry **EXCELLENT**

Fluorescence **SLIGHT**

Inscription(s) **IGI LG702546173**

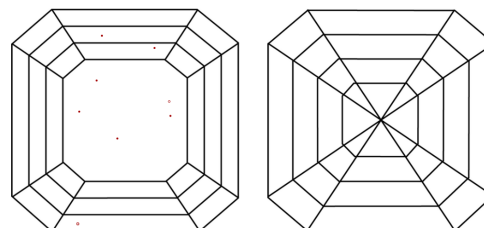
Comments: This Laboratory Grown Diamond was created by Chemical Vapor Deposition (CVD) growth process. Indications of post-growth treatment.

PROPORTIONS



Sample Image Used

CLARITY CHARACTERISTICS



KEY TO SYMBOLS

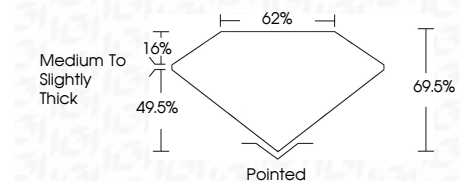
Red symbols indicate internal characteristics.
Green symbols indicate external characteristics.

COLOR

D E F G H I J Faint Very Light Light

CLARITY

IF	VS ¹⁻²	VS ¹⁻²	SI ¹⁻²	I ¹⁻³
Internally Flawless	Very Very Slightly Included	Very Slightly Included	Slightly Included	Included



ADDITIONAL GRADING INFORMATION

Polish **EXCELLENT**

Symmetry **EXCELLENT**

Fluorescence **SLIGHT**

Inscription(s) **IGI LG702546173**

Comments: This Laboratory Grown Diamond was created by Chemical Vapor Deposition (CVD) growth process. Indications of post-growth treatment.



IGI



May 7, 2025
IGI Report No **LG702546173**
SQUARE EMERALD CUT
6.91 X 6.82 X 4.74 MM
Carat Weight **2.08 CARATS**
Color Grade **FANCY INTENSE PINK**
Clarity Grade **VS 1**
Depth **69.5%**
Table **62%**
Girdle **Medium to Slightly Thick**
Culet **Pointed**
Polish **EXCELLENT**
Symmetry **EXCELLENT**
Fluorescence **SLIGHT**
Inscription(s) **IGI LG702546173**
Comments: This Laboratory Grown Diamond was created by Chemical Vapor Deposition (CVD) growth process. Indications of post-growth treatment.