



**INTERNATIONAL
GEMOLOGICAL
INSTITUTE**

ELECTRONIC COPY

LABORATORY GROWN DIAMOND REPORT

May 1, 2025	
IGI Report Number	LG702545844
Description	LABORATORY GROWN DIAMOND
Shape and Cutting Style	MODIFIED RECTANGULAR CUSHION MIXED CUT
Measurements	9.64 X 5.86 X 3.92 MM

GRADING RESULTS

Carat Weight	2.00 CARATS
Color Grade	F
Clarity Grade	VVS 2

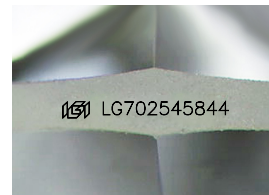
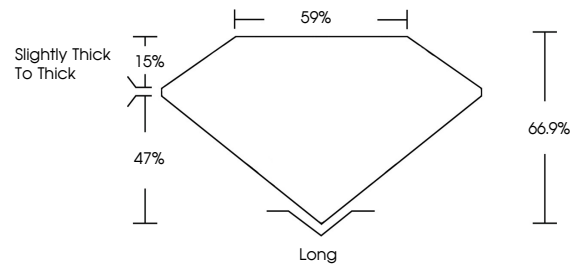
ADDITIONAL GRADING INFORMATION

Polish	EXCELLENT
Symmetry	EXCELLENT
Fluorescence	NONE
Inscription(s)	 LG702545844

Comments: This Laboratory Grown Diamond was created by Chemical Vapor Deposition (CVD) growth process.
Type IIa

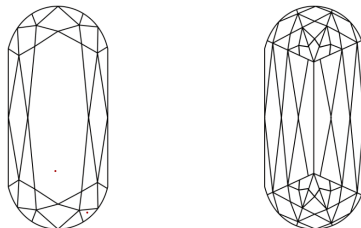
LG702545844
Report verification at igi.org

PROPORTIONS



Sample Image Used

CLARITY CHARACTERISTICS



KEY TO SYMBOLS

Red symbols indicate internal characteristics.
Green symbols indicate external characteristics.

COLOR

D E F G H I J Faint Very Light Light

CLARITY

IF WS¹⁻² VS¹⁻² SI¹⁻² I¹⁻³

Internally Flawless	Very Very Slightly Included	Very Slightly Included	Slightly Included	Included
------------------------	--------------------------------	---------------------------	----------------------	----------



© IGI 2020, International Gemological Institute

FD - 10 20

LABORATORY GROWN DIAMOND REPORT



May 1, 2025

IGI Report Number **LG702545844**

Description	LABORATORY GROWN DIAMOND
-------------	--------------------------

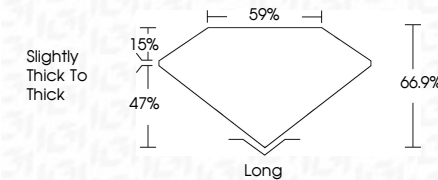
Shape and Cutting Style **MODIFIED RECTANGULAR
CUSHION MIXED CUT**

Measurements **9.64 X 5.86 X 3.92 MM**

GRADING RESULTS

Carat Weight **2.00 CARATS**

Color Grade **F**

Clarity Grade VVS 2

ADDITIONAL GRADING INFORMATION

Polish **EXCELLENT**Symmetry **EXCELLENT**Fluorescence **NONE**Inscription(s) LG70254584

Comments: This Laboratory Grown Diamond was created by Chemical Vapor Deposition (CVD) growth process.
Type IIa



IG

May 1, 2025	
IGI Report No. LG70254844	
MODIFIED RECTANGULAR CUSHION MINI CUT	
2.00 CARATS	
Color Weight	VVS 2
Carat Weight	66.9%
Color Grade	95%
Clarity Grade	Slightly Thick to Thick
Depth	Long
Girdle	EXCELLENT
	EXCELLENT
	NONE
	ISSUE LG70254844
Comments:	
The Laboratory Grown Diamond was created by Chemical Vapor Deposition (CVD) growth process. Type IIa	