



**ELECTRONIC COPY**

LG702539349  
Report verification at igi.org



May 8, 2025  
IGI Report Number **LG702539349**  
Description **LABORATORY GROWN DIAMOND**  
Shape and Cutting Style **ROUND BRILLIANT**  
Measurements **8.19 - 8.21 X 5.04 MM**  
**GRADING RESULTS**  
Carat Weight **2.09 CARATS**  
Color Grade **FANCY VIVID GREEN**  
Clarity Grade **VS 1**  
Cut Grade **IDEAL**

May 8, 2025  
IGI Report Number **LG702539349**  
Description **LABORATORY GROWN DIAMOND**  
Shape and Cutting Style **ROUND BRILLIANT**  
Measurements **8.19 - 8.21 X 5.04 MM**

**GRADING RESULTS**

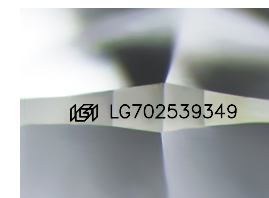
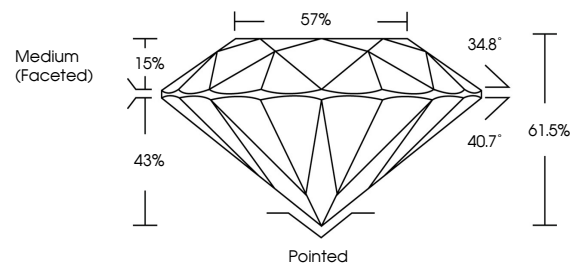
Carat Weight **2.09 CARATS**  
Color Grade **FANCY VIVID GREEN**  
Clarity Grade **VS 1**  
Cut Grade **IDEAL**

**ADDITIONAL GRADING INFORMATION**

Polish **EXCELLENT**  
Symmetry **EXCELLENT**  
Fluorescence **VERY SLIGHT**  
Inscription(s) **LG702539349**

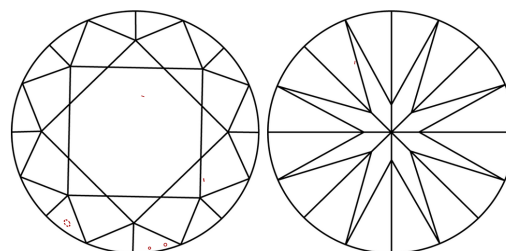
Comments: This Laboratory Grown Diamond was created by Chemical Vapor Deposition (CVD) growth process.  
Indications of post-growth treatment.

**PROPORTIONS**



Sample Image Used

**CLARITY CHARACTERISTICS**



**KEY TO SYMBOLS**

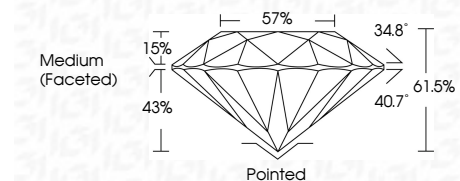
Red symbols indicate internal characteristics.  
Green symbols indicate external characteristics.

**COLOR**

D E F G H I J Faint Very Light Light

**CLARITY**

IF	VS <sup>1-2</sup>	VS <sup>1-2</sup>	SI <sup>1-2</sup>	I <sup>1-3</sup>
Internally Flawless	Very Very Slightly Included	Very Slightly Included	Slightly Included	Included



**ADDITIONAL GRADING INFORMATION**

Polish **EXCELLENT**  
Symmetry **EXCELLENT**  
Fluorescence **VERY SLIGHT**  
Inscription(s) **LG702539349**  
Comments: This Laboratory Grown Diamond was created by Chemical Vapor Deposition (CVD) growth process.  
Indications of post-growth treatment.



May 8, 2025  
IGI Report No LG702539349  
**ROUND BRILLIANT**  
8.19 - 8.21 X 5.04 MM  
2.09 CARATS  
FANCY VIVID GREEN  
VS 1  
IDEAL  
61.5%  
57%  
Medium (Faceted)Pointed  
EXCELLENT  
EXCELLENT  
VERY SLIGHT  
EXCELLENT  
EXCELLENT  
IGI LG702539349

Comments: This Laboratory Grown Diamond was created by Chemical Vapor Deposition (CVD) growth process.  
Indications of post-growth treatment.