

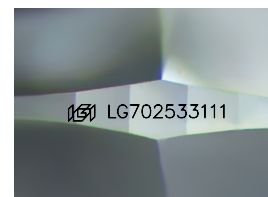
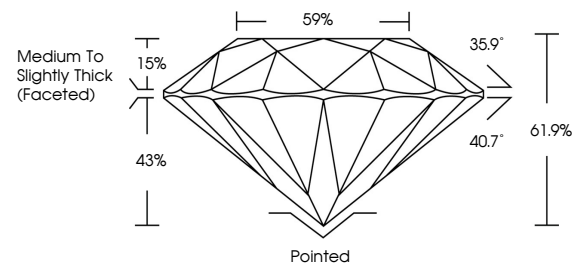


ELECTRONIC COPY

LABORATORY GROWN DIAMOND REPORT

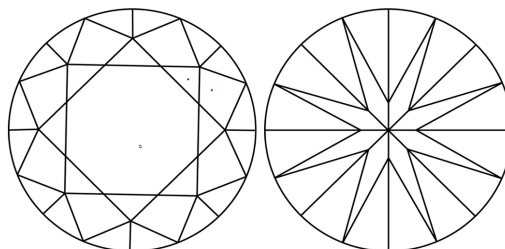
LG702533111
Report verification at igi.org

PROPORTIONS



Sample Image Used

CLARITY CHARACTERISTICS



KEY TO SYMBOLS

Red symbols indicate internal characteristics.
Green symbols indicate external characteristics.

COLOR

D E F G H I J Faint Very Light Light

CLARITY

IF WS¹⁻² VS¹⁻² SI¹⁻² |¹⁻³

Internally Flawless	Very Very Slightly Included	Very Slightly Included	Slightly Included	Included
------------------------	--------------------------------	---------------------------	----------------------	----------



April 29, 2025

IGI Report Number **LG702533111**

Description	LABORATORY GROWN DIAMOND
-------------	--------------------------

Shape and Cutting Style **ROUND BRILLIANT**

Measurements 8.87 - 8.92 X 5.51 MM

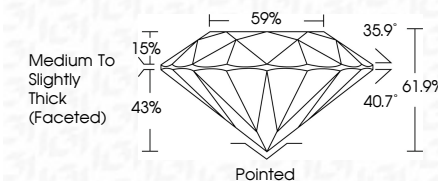
GRADING RESULTS

Carat Weight **2.73 CARATS**

Color Grade D

Clarity Grade VS 1

Cut Grade **IDEAL**



ADDITIONAL GRADING INFORMATION

Polish **EXCELLENT**Symmetry **EXCELLENT**Fluorescence **NONE**Inscription(s) LG702533111

Comments: This Laboratory Grown Diamond was created by Chemical Vapor Deposition (CVD) growth process.
Type IIa



© IGI 2020, International Gemological Institute

FD - 10 20

www.igi.org

THIS DOCUMENT WAS PRODUCED WITH THE FOLLOWING SECURITY MEASURES: SPECIAL DOCUMENT PAPER, INK SCREENS, WATERMARK BACKGROUND DESIGNS, HOLOGRAM AND OTHER SECURITY FEATURES NOT LISTED AND DO EXCEED DOCUMENT SECURITY INDUSTRY GUIDELINES

April 29, 2025
IGI Report No LG702533111
ROUND BRILLIANT

8.87 - 8.92 X 5.51 MM	273 CARATS
Carat Weight	Vs 1
Color Grade	IDEAL
Cut Grade	61.9%
Depth	59%
Table	Medium to Slightly Thick (faceted)
Girdle	Poined
Culet	EXCELLENT
Polish	EXCELLENT
Symmetry	NONE
Fluorescence	None
Inscriptions	see #CZM0533111

Comments:
This Laboratory Grown Diamond was created by Chemical Vapor Deposition (CVD) growth process.