



ELECTRONIC COPY

LG702529495
Report verification at igi.org



May 19, 2025
IGI Report Number **LG702529495**

Description **LABORATORY GROWN DIAMOND**

Shape and Cutting Style **CUT CORNERED
RECTANGULAR MODIFIED
BRILLIANT**

Measurements **7.11 X 5.01 X 3.25 MM**

GRADING RESULTS

Carat Weight **1.00 CARAT**

Color Grade **FANCY DEEP ORANGE**

Clarity Grade **VS 1**

LABORATORY GROWN DIAMOND REPORT

May 19, 2025

IGI Report Number **LG702529495**

Description **LABORATORY GROWN DIAMOND**

Shape and Cutting Style **CUT CORNERED RECTANGULAR
MODIFIED BRILLIANT**

Measurements **7.11 X 5.01 X 3.25 MM**

GRADING RESULTS

Carat Weight **1.00 CARAT**

Color Grade **FANCY DEEP ORANGE**

Clarity Grade **VS 1**

ADDITIONAL GRADING INFORMATION

Polish **VERY GOOD**

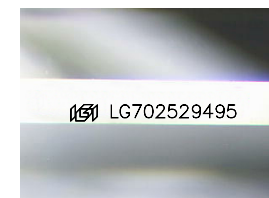
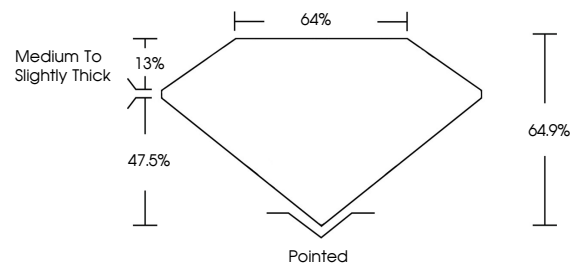
Symmetry **EXCELLENT**

Fluorescence **NONE**

Inscription(s) **IGI LG702529495**

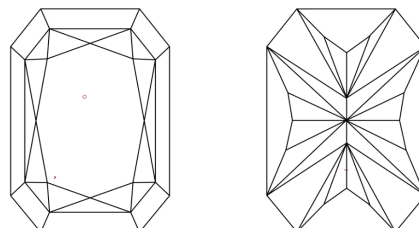
Comments: This Laboratory Grown Diamond was created by Chemical Vapor Deposition (CVD) growth process. Indications of post-growth treatment.

PROPORTIONS



Sample Image Used

CLARITY CHARACTERISTICS



KEY TO SYMBOLS

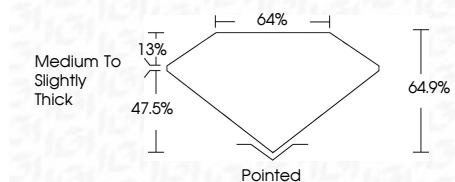
Red symbols indicate internal characteristics.
Green symbols indicate external characteristics.

COLOR

D E F G H I J Faint Very Light Light

CLARITY

IF	VS ¹⁻²	VS ¹⁻²	SI ¹⁻²	I ¹⁻³
Internally Flawless	Very Very Slightly Included	Very Slightly Included	Slightly Included	Included



ADDITIONAL GRADING INFORMATION

Polish **VERY GOOD**

Symmetry **EXCELLENT**

Fluorescence **NONE**

Inscription(s) **IGI LG702529495**

Comments: This Laboratory Grown Diamond was created by Chemical Vapor Deposition (CVD) growth process. Indications of post-growth treatment.



IGI



May 19, 2025
IGI Report No. LG702529495
CUT CORNERED RECT. MODIFIED BRILLIANT
7.11 X 5.01 X 3.25 MM
Carat Weight 1.00 CARAT
Color Grade FANCY DEEP ORANGE
Clarity Grade VS 1
Table 64.9%
Girdle 47.5%
Medium to Slightly Thick
Culet Pointed
Polish VERY GOOD
Symmetry EXCELLENT
Fluorescence NONE
Inscription(s) IGI LG702529495

Comments: This Laboratory Grown Diamond was created by Chemical Vapor Deposition (CVD) growth process. Indications of post-growth treatment.