

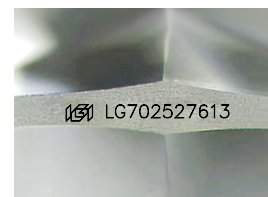
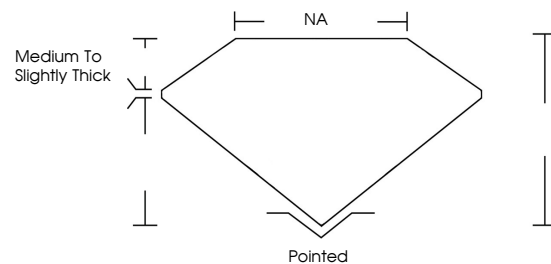


ELECTRONIC COPY

LABORATORY GROWN DIAMOND REPORT

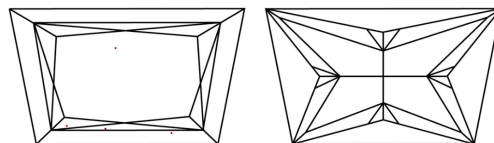
LG702527613
Report verification at igi.org

PROPORTIONS



Sample Image Used

CLARITY CHARACTERISTICS



KEY TO SYMBOLS

Red symbols indicate internal characteristics.
Green symbols indicate external characteristics.

COLOR

D E F G H I J Faint Very Light Light

CLARITY

IF VS¹⁻² VS¹⁻² S¹⁻² |¹⁻³

Internally Flawless	Very Very Slightly Included	Very Slightly Included	Slightly Included	Included
------------------------	--------------------------------	---------------------------	----------------------	----------

LABORATORY GROWN DIAMOND REPORT



May 5, 2025

IGI Report Number **LG702527613**

Description	LABORATORY GROWN DIAMOND
-------------	--------------------------

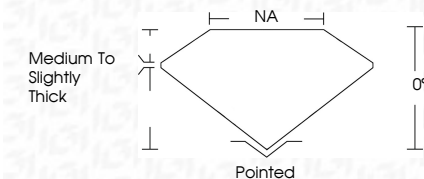
Shape and Cutting Style **TRAPEZE BRILLIANT CUT**

Measurements **9.35 X 5.46 X 3.77 MM**

GRADING RESULTS

Carat Weight 1.56 CARAT

Color Grade E

Clarity Grade **VVS 2**

ADDITIONAL GRADING INFORMATION

Polish **EXCELLENCE**Symmetry **EXCELLEN**

Fluorescence NONI

Inscription(s) LG702527613

Comments: This Laboratory Grown Diamond was created by Chemical Vapor Deposition (CVD) growth process.
Type IIa



© IGI 2020, International Gemological Institute

FD - 10 20



THIS DOCUMENT WAS PRODUCED WITH THE FOLLOWING SECURITY MEASURES: SPECIAL DOCUMENT PAPER, INK SCREENS, WATERMARK, BACKGROUND DESIGNS, HOLOGRAM AND OTHER SECURITY FEATURES NOT LISTED AND DO EXCEED DOCUMENT SECURITY INDUSTRY GUIDELINES

www.igi.org

	May 9, 2006
G Report No LG70827613	
NATPEE BRILLIANT CUT	
SIZES: 35 X 45 X 3.77 MM	
Carat Weight	1.56 CARAT
Color Grade	E
Clarity Grade	VVS 2
Depth	0%
Table	NA
Girdle	Medium to Slightly Thick
Culet	Poished
Polish	EXCELLENT
Symmetry	EXCELLENT
Fluorescence	NONE
Inscriptions(s)	#B1 LG70827613

Comments:

- Many Crown Diamond was created by Chemical Vapor Deposition (CVD) growth process.
- type IIA