



**ELECTRONIC COPY**

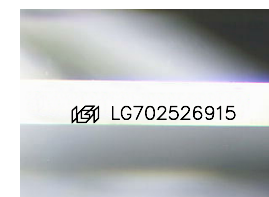
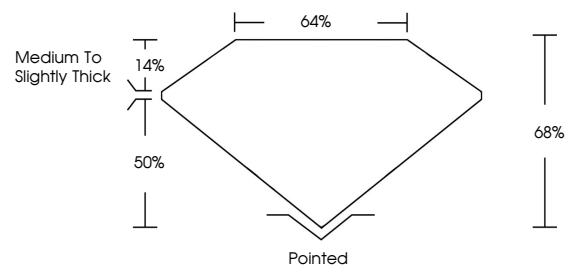
LG702526915  
Report verification at [igi.org](http://igi.org)



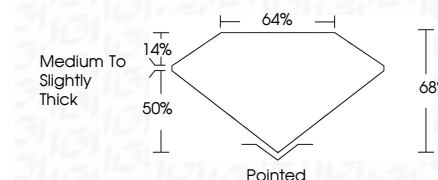
April 26, 2025  
IGI Report Number **LG702526915**  
Description **LABORATORY GROWN DIAMOND**  
Shape and Cutting Style **CUT CORNERED  
RECTANGULAR MODIFIED  
BRILLIANT**  
Measurements **12.65 X 8.95 X 6.09 MM**  
**GRADING RESULTS**  
Carat Weight **6.01 CARATS**  
Color Grade **FANCY INTENSE PINK**  
Clarity Grade **VS 1**

April 26, 2025  
IGI Report Number **LG702526915**  
Description **LABORATORY GROWN DIAMOND**  
Shape and Cutting Style **CUT CORNERED RECTANGULAR  
MODIFIED BRILLIANT**  
Measurements **12.65 X 8.95 X 6.09 MM**  
**GRADING RESULTS**  
Carat Weight **6.01 CARATS**  
Color Grade **FANCY INTENSE PINK**  
Clarity Grade **VS 1**

**PROPORTIONS**



Sample Image Used



**ADDITIONAL GRADING INFORMATION**

Polish **VERY GOOD**  
Symmetry **EXCELLENT**  
Fluorescence **STRONG**  
Inscription(s) **IGI LG702526915**

Comments: This Laboratory Grown Diamond was created by Chemical Vapor Deposition (CVD) growth process. Indications of post-growth treatment.

**COLOR**

D E F G H I J Faint Very Light Light

**CLARITY**

IF	WS <sup>1-2</sup>	VS <sup>1-2</sup>	SI <sup>1-2</sup>	I <sup>1-3</sup>
Internally Flawless	Very Very Slightly Included	Very Slightly Included	Slightly Included	Included

**ADDITIONAL GRADING INFORMATION**

Polish **VERY GOOD**  
Symmetry **EXCELLENT**  
Fluorescence **STRONG**  
Inscription(s) **IGI LG702526915**  
Comments: This Laboratory Grown Diamond was created by Chemical Vapor Deposition (CVD) growth process. Indications of post-growth treatment.



**IGI**

April 26, 2025  
IGI Report No **LG702526915**  
**CUT CORNERED RECT. MODIFIED BRILLIANT**  
**12.65 X 8.95 X 6.09 MM**  
**6.01 CARATS**  
**FANCY INTENSE PINK**  
**VS 1**  
**68% 64%**  
**Medium to Slightly Thick**  
**Polished**  
**VERY GOOD**  
**EXCELLENT**  
**STRONG**  
**IGI LG702526915**

Comments: This Laboratory Grown Diamond was created by Chemical Vapor Deposition (CVD) growth process. Indications of post-growth treatment.