



**ELECTRONIC COPY**

LG702523357  
Report verification at igi.org



May 9, 2025

IGI Report Number **LG702523357**

Description **LABORATORY GROWN DIAMOND**

Shape and Cutting Style **PEAR MIXED CUT**

Measurements **15.93 X 7.62 X 4.89 MM**

**GRADING RESULTS**

Carat Weight **3.27 CARATS**

Color Grade **FANCY VIVID GREEN**

Clarity Grade **VS 1**

May 9, 2025

IGI Report Number **LG702523357**

Description **LABORATORY GROWN DIAMOND**

Shape and Cutting Style **PEAR MIXED CUT**

Measurements **15.93 X 7.62 X 4.89 MM**

**GRADING RESULTS**

Carat Weight **3.27 CARATS**

Color Grade **FANCY VIVID GREEN**

Clarity Grade **VS 1**

**ADDITIONAL GRADING INFORMATION**

Polish **EXCELLENT**

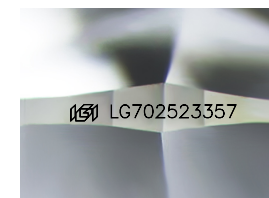
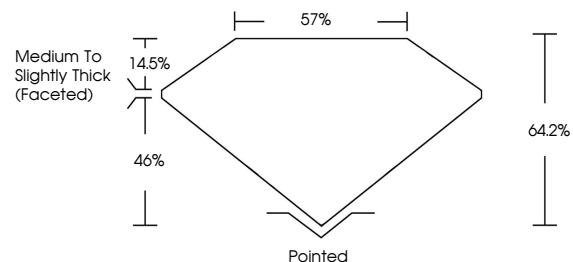
Symmetry **EXCELLENT**

Fluorescence **NONE**

Inscription(s) **IGI LG702523357**

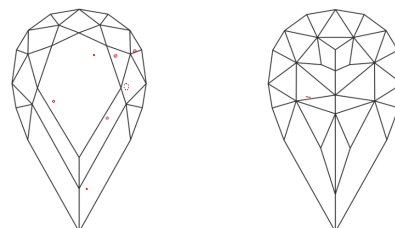
Comments: This Laboratory Grown Diamond was created by Chemical Vapor Deposition (CVD) growth process. Indications of post-growth treatment.

**PROPORTIONS**



Sample Image Used

**CLARITY CHARACTERISTICS**



**KEY TO SYMBOLS**

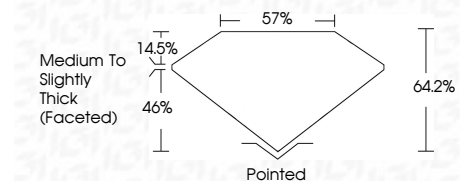
Red symbols indicate internal characteristics.  
Green symbols indicate external characteristics.

**COLOR**

D E F G H I J Faint Very Light Light

**CLARITY**

IF	VS <sup>1-2</sup>	VS <sup>1-2</sup>	SI <sup>1-2</sup>	I <sup>1-3</sup>
Internally Flawless	Very Very Slightly Included	Very Slightly Included	Slightly Included	Included



**ADDITIONAL GRADING INFORMATION**

Polish **EXCELLENT**

Symmetry **EXCELLENT**

Fluorescence **NONE**

Inscription(s) **IGI LG702523357**

Comments: This Laboratory Grown Diamond was created by Chemical Vapor Deposition (CVD) growth process. Indications of post-growth treatment.



May 9, 2025  
IGI Report No LG702523357  
PEAR MIXED CUT

3.27 CARATS  
FANCY VIVID GREEN

15.93 X 7.62 X 4.89 MM

Carat Weight  
Color Grade  
Clarity Grade  
Table  
Depth  
Girdle  
Culet  
Polish  
Symmetry  
Fluorescence  
Inscription(s)

VS 1  
64.2%  
57%  
Medium to Slightly Thick (Faceted)  
Pointed  
EXCELLENT  
EXCELLENT  
NONE  
IGI LG702523357

Comments: This Laboratory Grown Diamond was created by Chemical Vapor Deposition (CVD) growth process. Indications of post-growth treatment.