



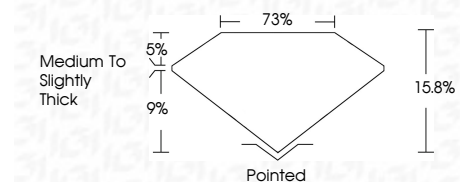
**ELECTRONIC COPY**

LG702522410  
Report verification at igi.org



April 26, 2025  
IGI Report Number **LG702522410**  
Description **LABORATORY GROWN DIAMOND**  
Shape and Cutting Style **PENTAGONAL MIXED CUT**  
Measurements **17.61 X 24.50 X 3.87 MM**

**GRADING RESULTS**  
Carat Weight **12.40 CARATS**  
Color Grade **E**  
Clarity Grade **VVS 2**



**ADDITIONAL GRADING INFORMATION**  
Polish **EXCELLENT**  
Symmetry **EXCELLENT**  
Fluorescence **NONE**  
Inscription(s) **IGI LG702522410**  
Comments: This Laboratory Grown Diamond was created by Chemical Vapor Deposition (CVD) growth process. Type IIa



April 26, 2025  
IGI Report No LG702522410  
**PENTAGONAL MIXED CUT**  
17.61 X 24.50 X 3.87 MM  
12.40 CARATS  
E  
VVS 2  
15.8%  
9%  
Medium to Slightly Thick  
Pointed  
EXCELLENT  
EXCELLENT  
NONE  
IGI LG702522410  
Comments: This Laboratory Grown Diamond was created by Chemical Vapor Deposition (CVD) growth process. Type IIa

**LABORATORY GROWN DIAMOND REPORT**

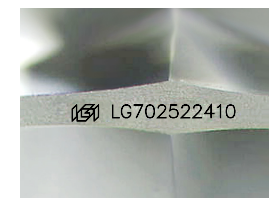
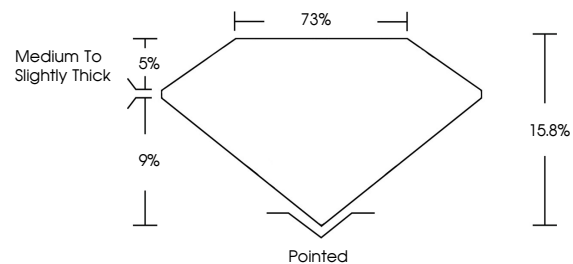
April 26, 2025  
IGI Report Number **LG702522410**  
Description **LABORATORY GROWN DIAMOND**  
Shape and Cutting Style **PENTAGONAL MIXED CUT**  
Measurements **17.61 X 24.50 X 3.87 MM**

**GRADING RESULTS**  
Carat Weight **12.40 CARATS**  
Color Grade **E**  
Clarity Grade **VVS 2**

**ADDITIONAL GRADING INFORMATION**  
Polish **EXCELLENT**  
Symmetry **EXCELLENT**  
Fluorescence **NONE**  
Inscription(s) **IGI LG702522410**

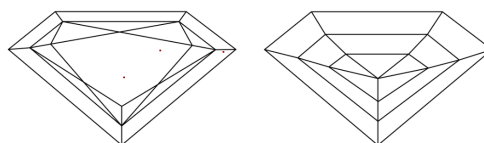
Comments: This Laboratory Grown Diamond was created by Chemical Vapor Deposition (CVD) growth process. Type IIa

**PROPORTIONS**



Sample Image Used

**CLARITY CHARACTERISTICS**



**KEY TO SYMBOLS**

Red symbols indicate internal characteristics.  
Green symbols indicate external characteristics.

**COLOR**

D E F G H I J Faint Very Light Light

**CLARITY**

IF	VS <sup>1-2</sup>	VS <sup>1-2</sup>	SI <sup>1-2</sup>	I <sup>1-3</sup>
Internally Flawless	Very Very Slightly Included	Very Slightly Included	Slightly Included	Included

