

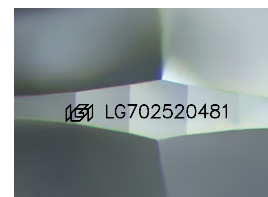
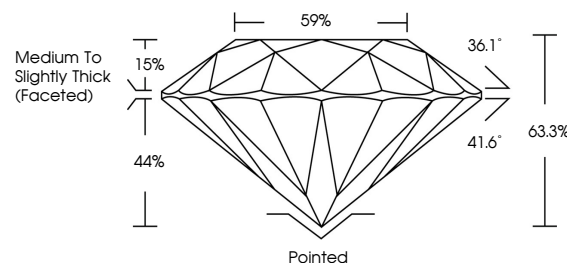


ELECTRONIC COPY

LABORATORY GROWN DIAMOND REPORT

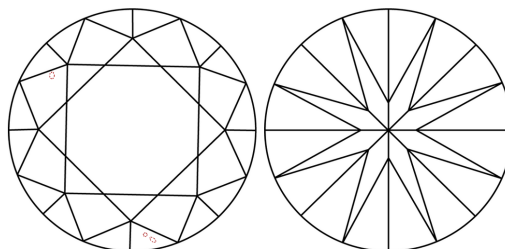
LG702520481
Report verification at igi.org

PROPORTIONS



Sample Image Used

CLARITY CHARACTERISTICS



KEY TO SYMBOLS

Red symbols indicate internal characteristics.
Green symbols indicate external characteristics.

COLOR

D E F G H I J Faint Very Light Light

CLARITY

IF WS¹⁻² VS¹⁻² SI¹⁻² |¹⁻³

Internally Flawless	Very Very Slightly Included	Very Slightly Included	Slightly Included	Included
------------------------	--------------------------------	---------------------------	----------------------	----------



© IGI 2020, International Gemological Institute

FD - 10 20

www.igi.org

LABORATORY GROWN DIAMOND REPORT



April 24, 2025

IGI Report Number **LG702520481**Description **LABORATORY GROWN DIAMOND**Shape and Cutting Style **ROUND BRILLIANT**

Measurements 8.08 - 8.13 X 5.13 MM

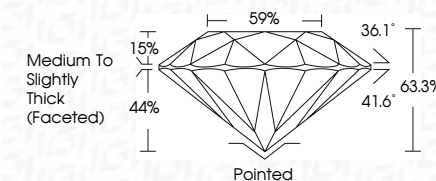
GRADING RESULTS

Carat Weight **2.09 CARATS**

Color Grade

Clarity Grade VS 1

Cut Grade **EXCELLENT**



ADDITIONAL GRADING INFORMATION

Polish **EXCELLENT**Symmetry **EXCELLENT**Fluorescence **NONE**Inscription(s) LG702520481

Comments: This Laboratory Grown Diamond was created by Chemical Vapor Deposition (CVD) growth process.
Type IIa



					VSI	E	2.09 CARATS
					EXCELLENT		
					68.3%		
					59%		
					Medium To Slightly Thick (included)		
					Poished		
					EXCELLENT		
					EXCELLENT		
					NONE		
					(#) L702620481		
Comments:							
This Laboratory Grown Diamond was created by Chemical Vapor Deposition (CVD) growth process.							
Type IIA							