



ELECTRONIC COPY

LABORATORY GROWN DIAMOND REPORT

May 9, 2025
IGI Report Number LG702515480
Description LABORATORY GROWN DIAMOND
Shape and Cutting Style EMERALD CUT
Measurements 8.31 X 5.93 X 4.05 MM

GRADING RESULTS

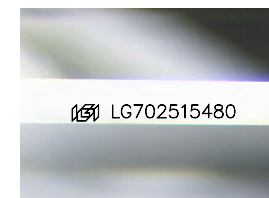
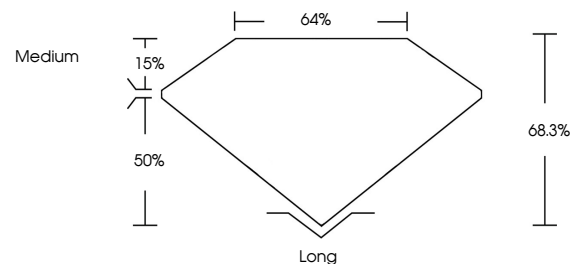
Carat Weight 2.04 CARATS
Color Grade D
Clarity Grade VVS 2

ADDITIONAL GRADING INFORMATION

Polish EXCELLENT
Symmetry EXCELLENT
Fluorescence NONE
Inscription(s) LG702515480

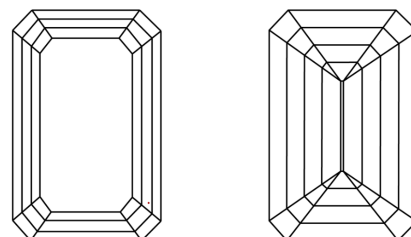
Comments: This Laboratory Grown Diamond was created by Chemical Vapor Deposition (CVD) growth process.
Type IIa

PROPORTIONS



Sample Image Used

CLARITY CHARACTERISTICS



KEY TO SYMBOLS

Red symbols indicate internal characteristics.
Green symbols indicate external characteristics.

COLOR

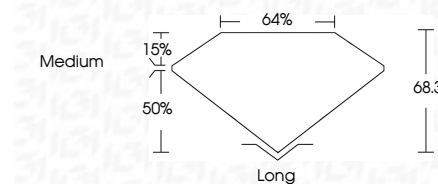
D E F G H I J Faint Very Light Light

CLARITY

IF WS¹⁻² VS¹⁻² SI¹⁻² I¹⁻³
Internally Flawless Very Very Slightly Included Very Slightly Included Slightly Included Included



May 9, 2025
IGI Report Number LG702515480
Description LABORATORY GROWN DIAMOND
Shape and Cutting Style EMERALD CUT
Measurements 8.31 X 5.93 X 4.05 MM
GRADING RESULTS
Carat Weight 2.04 CARATS
Color Grade D
Clarity Grade VVS 2



ADDITIONAL GRADING INFORMATION

Polish EXCELLENT
Symmetry EXCELLENT
Fluorescence NONE
Inscription(s) LG702515480
Comments: This Laboratory Grown Diamond was created by Chemical Vapor Deposition (CVD) growth process.
Type IIa



IGI



May 9, 2025
IGI Report No LG702515480
EMERALD CUT
8.31 X 5.93 X 4.05 MM
2.04 CARATS
Color Grade D
Clarity Grade VVS 2
Depth 68.3%
Table 64%
Girdle Medium
Culet Long
Polish EXCELLENT
Symmetry EXCELLENT
Fluorescence NONE
Inscription(s) LG702515480
Comments: This Laboratory Grown Diamond was created by Chemical Vapor Deposition (CVD) growth process.
Type IIa