



# INTERNATIONAL GEMOLOGICAL INSTITUTE

## LABORATORY GROWN DIAMOND REPORT

April 28, 2025  
IGI Report Number **LG702511018**  
Description **LABORATORY GROWN DIAMOND**  
Shape and Cutting Style **ROUND BRILLIANT**  
Measurements **3.57 - 3.62 X 2.20 MM**

### GRADING RESULTS

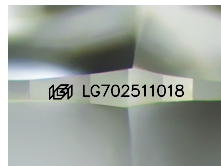
Carat Weight **0.18 CARAT**  
Color Grade **D**  
Clarity Grade **VVS 2**  
Cut Grade **EXCELLENT**

### ADDITIONAL GRADING INFORMATION

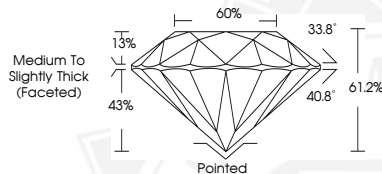
Polish **VERY GOOD**  
Symmetry **VERY GOOD**  
Fluorescence **NONE**  
Inscription(s) **IGI LG702511018**

Comments: This Laboratory Grown Diamond was created by  
Chemical Vapor Deposition (CVD) growth process.  
Type IIa

ELECTRONIC COPY



Sample Image Used



April 28, 2025  
IGI Report Number **LG702511018**  
ROUND BRILLIANT  
LABORATORY GROWN DIAMOND  
3.57 - 3.62 X 2.20 MM  
Carat Weight **0.18 CARAT**  
Color Grade **D**  
Clarity Grade **VVS 2**  
Cut Grade **EXCELLENT**  
Polish **VERY GOOD**  
Symmetry **VERY GOOD**  
Fluorescence **NONE**  
Inscription(s) **IGI LG702511018**

Comments: This Laboratory Grown  
Diamond was created by  
Chemical Vapor Deposition (CVD)  
growth process. Type IIa



April 28, 2025  
IGI Report Number **LG702511018**  
ROUND BRILLIANT  
LABORATORY GROWN DIAMOND  
3.57 - 3.62 X 2.20 MM  
Carat Weight **0.18 CARAT**  
Color Grade **D**  
Clarity Grade **VVS 2**  
Cut Grade **EXCELLENT**  
Polish **VERY GOOD**  
Symmetry **VERY GOOD**  
Fluorescence **NONE**  
Inscription(s) **IGI LG702511018**

Comments: This Laboratory Grown  
Diamond was created by  
Chemical Vapor Deposition (CVD)  
growth process. Type IIa



THIS DOCUMENT WAS PRODUCED WITH THE FOLLOWING SECURITY MEASURES: SPECIAL DOCUMENT PAPER, INK SCREENS, WATERMARK, BACKGROUND DESIGNS, HOLOGRAM AND OTHER SECURITY FEATURES NOT LISTED AND DO EXCEED DOCUMENT SECURITY INDUSTRY GUIDELINES.

For terms & conditions and to verify this report, please visit [www.igi.org](http://www.igi.org)