



ELECTRONIC COPY

LG702505376
Report verification at igi.org



May 8, 2025

IGI Report Number **LG702505376**

Description **LABORATORY GROWN DIAMOND**

Shape and Cutting Style **ROUND BRILLIANT**

Measurements **6.53 - 6.58 X 3.98 MM**

GRADING RESULTS

Carat Weight **1.06 CARAT**

Color Grade **FANCY VIVID BLUE**

Clarity Grade **VVS 2**

Cut Grade **IDEAL**

May 8, 2025

IGI Report Number **LG702505376**

Description **LABORATORY GROWN DIAMOND**

Shape and Cutting Style **ROUND BRILLIANT**

Measurements **6.53 - 6.58 X 3.98 MM**

GRADING RESULTS

Carat Weight **1.06 CARAT**

Color Grade **FANCY VIVID BLUE**

Clarity Grade **VVS 2**

Cut Grade **IDEAL**

ADDITIONAL GRADING INFORMATION

Polish **EXCELLENT**

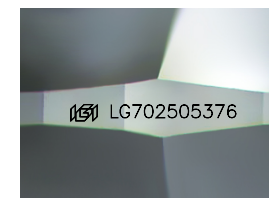
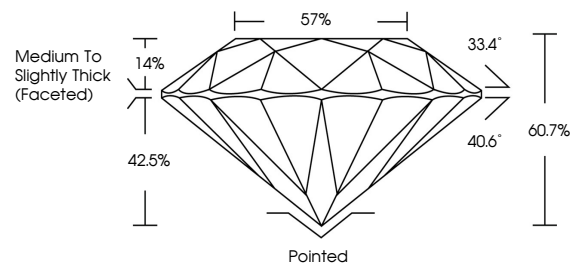
Symmetry **EXCELLENT**

Fluorescence **NONE**

Inscription(s) **IGI LG702505376**

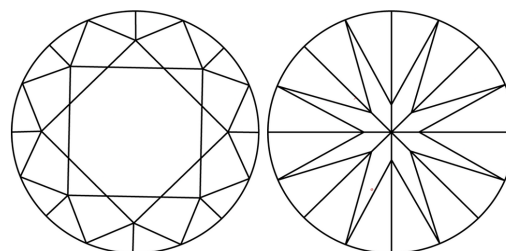
Comments: This Laboratory Grown Diamond was created by High Pressure High Temperature (HPHT) growth process. Indications of post-growth treatment.

PROPORTIONS



Sample Image Used

CLARITY CHARACTERISTICS



KEY TO SYMBOLS

Red symbols indicate internal characteristics.
Green symbols indicate external characteristics.

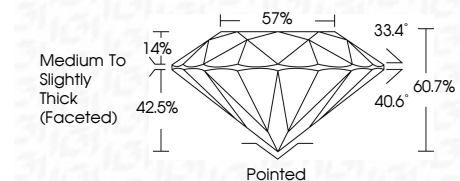
COLOR

D E F G H I J Faint Very Light Light

CLARITY

IF VS¹⁻² VS¹⁻² SI¹⁻² I¹⁻³

Internally Flawless Very Very Slightly Included Very Slightly Included Slightly Included Included



ADDITIONAL GRADING INFORMATION

Polish **EXCELLENT**

Symmetry **EXCELLENT**

Fluorescence **NONE**

Inscription(s) **IGI LG702505376**

Comments: This Laboratory Grown Diamond was created by High Pressure High Temperature (HPHT) growth process. Indications of post-growth treatment.



IGI



May 8, 2025	1.06 CARAT
IGI Report No LG702505376	FANCY VIVID BLUE
ROUND BRILLIANT	VVS 2
6.53 - 6.58 X 3.98 MM	IDEAL
Carat Weight	60.7%
Color Grade	57%
Clarity Grade	Medium To Slightly Thick (Faceted)
Cut Grade	Pointed
Depth	EXCELLENT
Table	EXCELLENT
Grade	NONE
Culet	IGI LG702505376
Polish	
Symmetry	
Fluorescence	
Inscription(s)	

Comments: This Laboratory Grown Diamond was created by High Pressure High Temperature (HPHT) growth process. Indications of post-growth treatment.