



**ELECTRONIC COPY**

LG702505367  
Report verification at igi.org



May 10, 2025  
IGI Report Number **LG702505367**  
Description **LABORATORY GROWN DIAMOND**  
Shape and Cutting Style **ROUND BRILLIANT**  
Measurements **7.61 - 7.65 X 4.31 MM**  
**GRADING RESULTS**  
Carat Weight **1.65 CARAT**  
Color Grade **FANCY VIVID PINK**  
Clarity Grade **VS 1**  
Cut Grade **FAIR**

May 10, 2025  
IGI Report Number **LG702505367**  
Description **LABORATORY GROWN DIAMOND**  
Shape and Cutting Style **ROUND BRILLIANT**  
Measurements **7.61 - 7.65 X 4.31 MM**

**GRADING RESULTS**

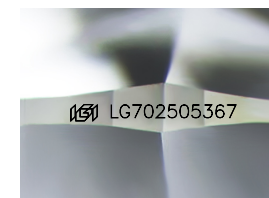
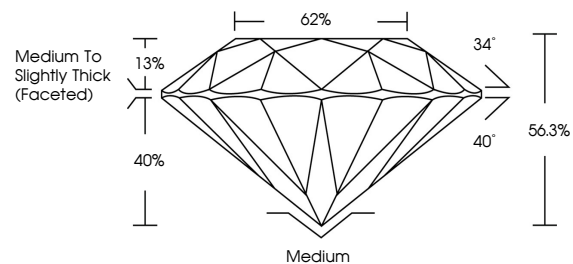
Carat Weight **1.65 CARAT**  
Color Grade **FANCY VIVID PINK**  
Clarity Grade **VS 1**  
Cut Grade **FAIR**

**ADDITIONAL GRADING INFORMATION**

Polish **EXCELLENT**  
Symmetry **EXCELLENT**  
Fluorescence **SLIGHT**  
Inscription(s) **IGI LG702505367**

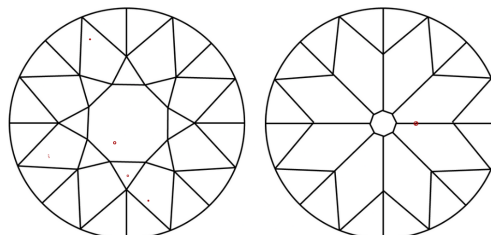
Comments: This Laboratory Grown Diamond was created by Chemical Vapor Deposition (CVD) growth process.  
Indications of post-growth treatment.

**PROPORTIONS**



Sample Image Used

**CLARITY CHARACTERISTICS**



**KEY TO SYMBOLS**

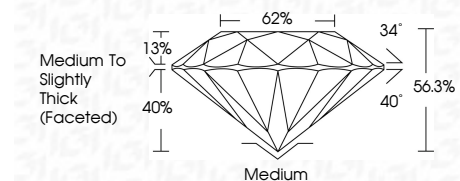
Red symbols indicate internal characteristics.  
Green symbols indicate external characteristics.

**COLOR**

D E F G H I J Faint Very Light Light

**CLARITY**

IF	VS <sup>1-2</sup>	VS <sup>1-2</sup>	SI <sup>1-2</sup>	I <sup>1-3</sup>
Internally Flawless	Very Very Slightly Included	Very Slightly Included	Slightly Included	Included



**ADDITIONAL GRADING INFORMATION**

Polish **EXCELLENT**  
Symmetry **EXCELLENT**  
Fluorescence **SLIGHT**  
Inscription(s) **IGI LG702505367**  
Comments: This Laboratory Grown Diamond was created by Chemical Vapor Deposition (CVD) growth process.  
Indications of post-growth treatment.



May 10, 2025  
IGI Report No LG702505367  
**ROUND BRILLIANT**  
7.61 - 7.65 X 4.31 MM  
1.65 CARAT  
FANCY VIVID PINK  
VS 1  
FAIR  
66.3%  
62%  
Medium To Slightly Thick (Faceted)  
Medium  
EXCELLENT  
EXCELLENT  
SLIGHT  
IGI LG702505367  
Comments: This Laboratory Grown Diamond was created by Chemical Vapor Deposition (CVD) growth process.  
Indications of post-growth treatment.