



ELECTRONIC COPY

LG702505253
Report verification at igi.org



May 6, 2025
IGI Report Number **LG702505253**
Description **LABORATORY GROWN DIAMOND**
Shape and Cutting Style **CUSHION MODIFIED BRILLIANT**
Measurements **6.95 X 5.71 X 3.66 MM**
GRADING RESULTS
Carat Weight **1.25 CARAT**
Color Grade **FANCY VIVID PINK**
Clarity Grade **VVS 2**

May 6, 2025
IGI Report Number **LG702505253**
Description **LABORATORY GROWN DIAMOND**
Shape and Cutting Style **CUSHION MODIFIED BRILLIANT**
Measurements **6.95 X 5.71 X 3.66 MM**

GRADING RESULTS

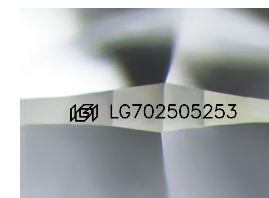
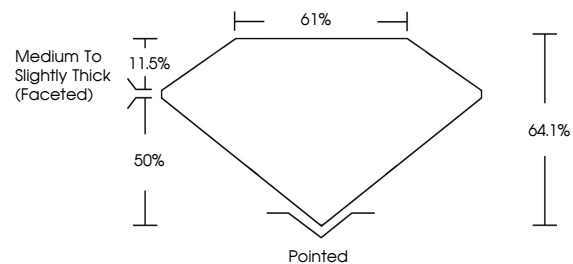
Carat Weight **1.25 CARAT**
Color Grade **FANCY VIVID PINK**
Clarity Grade **VVS 2**

ADDITIONAL GRADING INFORMATION

Polish **VERY GOOD**
Symmetry **EXCELLENT**
Fluorescence **SLIGHT**
Inscription(s) **LG702505253**

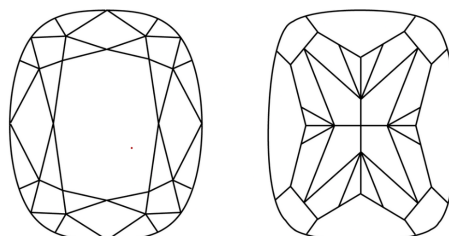
Comments: This Laboratory Grown Diamond was created by Chemical Vapor Deposition (CVD) growth process. Indications of post-growth treatment.

PROPORTIONS



Sample Image Used

CLARITY CHARACTERISTICS



KEY TO SYMBOLS

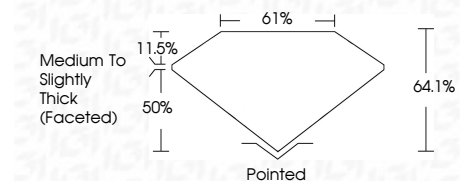
Red symbols indicate internal characteristics.
Green symbols indicate external characteristics.

COLOR

D E F G H I J Faint Very Light Light

CLARITY

IF	VS ¹⁻²	VS ¹⁻²	SI ¹⁻²	I ¹⁻³
Internally Flawless	Very Very Slightly Included	Very Slightly Included	Slightly Included	Included



ADDITIONAL GRADING INFORMATION

Polish **VERY GOOD**
Symmetry **EXCELLENT**
Fluorescence **SLIGHT**
Inscription(s) **LG702505253**
Comments: This Laboratory Grown Diamond was created by Chemical Vapor Deposition (CVD) growth process. Indications of post-growth treatment.



May 6, 2025
IGI Report No **LG702505253**
CUSHION MODIFIED BRILLIANT
6.95 X 5.71 X 3.66 MM
1.25 CARAT
FANCY VIVID PINK
VVS 2
64.1%
61%
Medium to Slightly Thick (Faceted)
Pointed
VERY GOOD
EXCELLENT
SLIGHT
IGI LG702505253

Comments: This Laboratory Grown Diamond was created by Chemical Vapor Deposition (CVD) growth process. Indications of post-growth treatment.

