



ELECTRONIC COPY

LG702505155
Report verification at igi.org



May 3, 2025

IGI Report Number **LG702505155**

Description **LABORATORY GROWN DIAMOND**

Shape and Cutting Style **EMERALD CUT**

Measurements **13.69 X 9.43 X 6.28 MM**

GRADING RESULTS

Carat Weight **8.09 CARATS**

Color Grade **F**

Clarity Grade **VVS 2**

May 3, 2025
IGI Report Number **LG702505155**
Description **LABORATORY GROWN DIAMOND**
Shape and Cutting Style **EMERALD CUT**
Measurements **13.69 X 9.43 X 6.28 MM**

GRADING RESULTS

Carat Weight **8.09 CARATS**

Color Grade **F**

Clarity Grade **VVS 2**

ADDITIONAL GRADING INFORMATION

Polish **EXCELLENT**

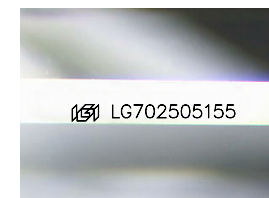
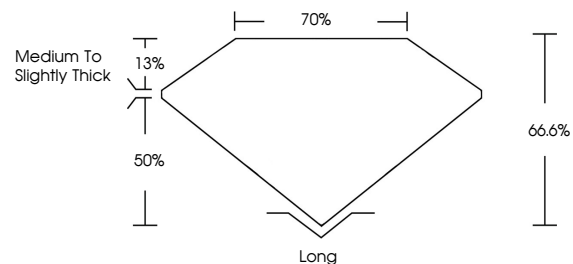
Symmetry **EXCELLENT**

Fluorescence **NONE**

Inscription(s) **IGI LG702505155**

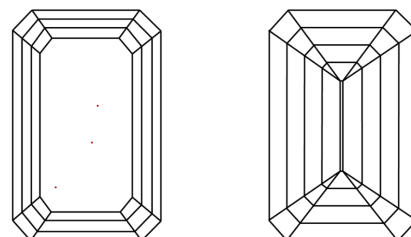
Comments: This Laboratory Grown Diamond was created by Chemical Vapor Deposition (CVD) growth process. Type IIa

PROPORTIONS



Sample Image Used

CLARITY CHARACTERISTICS



KEY TO SYMBOLS

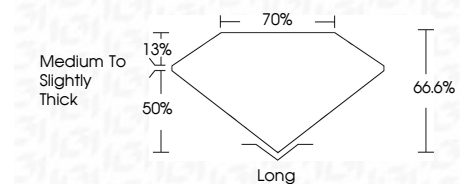
Red symbols indicate internal characteristics.
Green symbols indicate external characteristics.

COLOR

D E F G H I J Faint Very Light Light

CLARITY

IF	VS ¹⁻²	VVS ¹⁻²	S ¹⁻²	I ¹⁻³
Internally Flawless	Very Very Slightly Included	Very Slightly Included	Slightly Included	Included



ADDITIONAL GRADING INFORMATION

Polish **EXCELLENT**

Symmetry **EXCELLENT**

Fluorescence **NONE**

Inscription(s) **IGI LG702505155**

Comments: This Laboratory Grown Diamond was created by Chemical Vapor Deposition (CVD) growth process. Type IIa



IGI



May 3, 2025
IGI Report No LG702505155
EMERALD CUT
13.69 X 9.43 X 6.28 MM
8.09 CARATS
F
VVS 2
66.6%
70%
Medium to Slightly Thick
Long
EXCELLENT
EXCELLENT
NONE
IGI LG702505155
Comments: This Laboratory Grown Diamond was created by Chemical Vapor Deposition (CVD) growth process. Type IIa