



ELECTRONIC COPY

LG702502723
Report verification at igi.org



April 29, 2025
IGI Report Number **LG702502723**
Description **LABORATORY GROWN DIAMOND**
Shape and Cutting Style **ROUND BRILLIANT**
Measurements **8.23 - 8.25 X 5.02 MM**
GRADING RESULTS
Carat Weight **2.10 CARATS**
Color Grade **FANCY INTENSE PINK**
Clarity Grade **VS 1**
Cut Grade **IDEAL**

April 29, 2025
IGI Report Number **LG702502723**
Description **LABORATORY GROWN DIAMOND**
Shape and Cutting Style **ROUND BRILLIANT**
Measurements **8.23 - 8.25 X 5.02 MM**

GRADING RESULTS

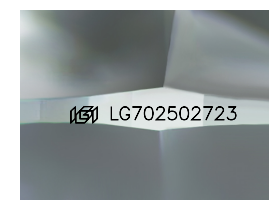
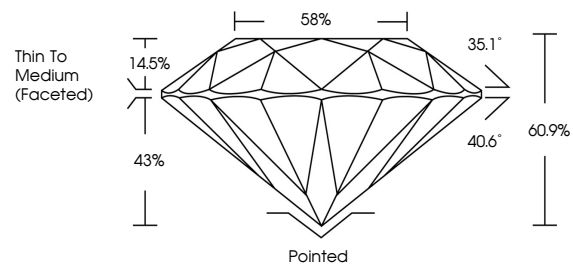
Carat Weight **2.10 CARATS**
Color Grade **FANCY INTENSE PINK**
Clarity Grade **VS 1**
Cut Grade **IDEAL**

ADDITIONAL GRADING INFORMATION

Polish **EXCELLENT**
Symmetry **EXCELLENT**
Fluorescence **SLIGHT**
Inscription(s) **IGI LG702502723**

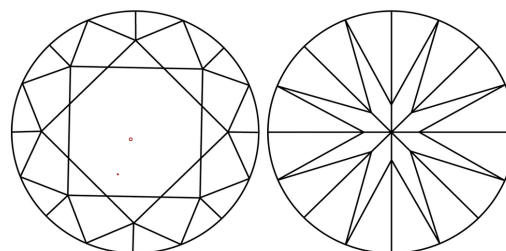
Comments: This Laboratory Grown Diamond was created by Chemical Vapor Deposition (CVD) growth process.
Indications of post-growth treatment.

PROPORTIONS



Sample Image Used

CLARITY CHARACTERISTICS



KEY TO SYMBOLS

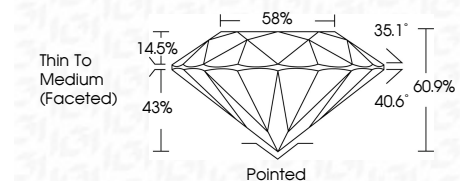
Red symbols indicate internal characteristics.
Green symbols indicate external characteristics.

COLOR

D E F G H I J Faint Very Light Light

CLARITY

IF	VS ¹⁻²	VS ¹⁻²	SI ¹⁻²	I ¹⁻³
Internally Flawless	Very Very Slightly Included	Very Slightly Included	Slightly Included	Included



ADDITIONAL GRADING INFORMATION

Polish **EXCELLENT**
Symmetry **EXCELLENT**
Fluorescence **SLIGHT**
Inscription(s) **IGI LG702502723**
Comments: This Laboratory Grown Diamond was created by Chemical Vapor Deposition (CVD) growth process.
Indications of post-growth treatment.



April 29, 2025
IGI Report No LG702502723
ROUND BRILLIANT
8.23 - 8.25 X 5.02 MM
2.10 CARATS
FANCY INTENSE PINK
Color Grade **VS 1**
Clarity Grade **IDEAL**
Depth **60.9%**
Table **58%**
Girdle **Thin To Medium (Faceted)**
Culet **Pointed**
Polish **EXCELLENT**
Symmetry **EXCELLENT**
Fluorescence **SLIGHT**
Inscription(s) **IGI LG702502723**
Comments: This Laboratory Grown Diamond was created by Chemical Vapor Deposition (CVD) growth process.
Indications of post-growth treatment.