

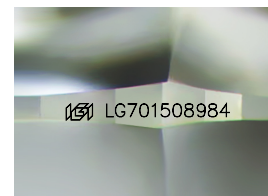
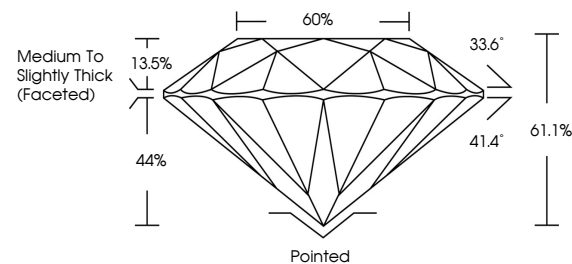


ELECTRONIC COPY

LABORATORY GROWN DIAMOND REPORT

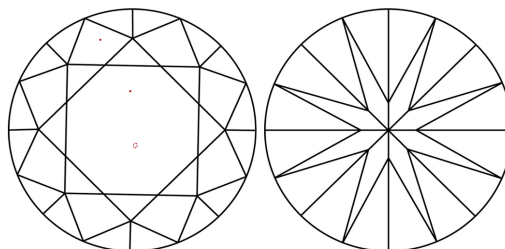
LG701508984
Report verification at igi.org

PROPORTIONS



Sample Image Used

CLARITY CHARACTERISTICS



KEY TO SYMBOLS

Red symbols indicate internal characteristics.
Green symbols indicate external characteristics.

COLOR

D E F G H I J Faint Very Light Light

CLARITY

IF WS¹⁻² VS¹⁻² SI¹⁻² |¹⁻³

Internally Flawless	Very Very Slightly Included	Very Slightly Included	Slightly Included	Included
------------------------	--------------------------------	---------------------------	----------------------	----------

LABORATORY GROWN DIAMOND REPORT



April 24, 2025

IGI Report Number LG701508984

Description **LABORATORY GROWN DIAMOND**Shape and Cutting Style **ROUND BRILLIANT**

Measurements 8.22 - 8.25 X 5.03 MM

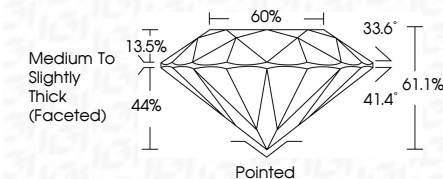
GRADING RESULTS

Carat Weight **2.09 CARATS**

Color Grade D

Clarity Grade VS 1

Cut Grade **IDEAL**



ADDITIONAL GRADING INFORMATION

Polish EXCELLENT

Symmetry **EXCELLENT**

Fluorescence NON

Inscription(s) LG701508984

Comments: This Laboratory Grown Diamond was created by Chemical Vapor Deposition (CVD) growth process.
Type IIa



© IGI 2020, International Gemological Institute

FD - 10 20

www.igi.org



THIS DOCUMENT WAS PRODUCED WITH THE FOLLOWING SECURITY MEASURES: SPECIAL DOCUMENT PAPER, INK SCREENS, WATERMARK, BACKGROUND DESIGNS, HOLOGRAM AND OTHER SECURITY FEATURES NOT LISTED AND DO EXCEED DOCUMENT SECURITY INDUSTRY GUIDELINE

April 24, 2025
IGI Report No LG701508984
ROUND BRILLIANT

6.22 - 6.25 X 5.03 MM	2.09 CARATS	D
Carat Weight	VS 1	IDEAL
Color Grade	61.1%	60%
Cut Grade	Medium to Slightly Thick (faceted)	
Depth		Pointed
Table		EXCELLENT
Girdle		EXCELLENT
Culet		NONE
Polish		EXCELLENT
Symmetry		NONE
Fluorescence		None (medium)

Comments:
This Laboratory Grown Diamond was created by Chemical Vapor Deposition (CVD) growth process.