



ELECTRONIC COPY

LG701506633
Report verification at igi.org



May 6, 2025

IGI Report Number **LG701506633**

Description **LABORATORY GROWN DIAMOND**

Shape and Cutting Style **SQUARE EMERALD CUT**

Measurements **5.45 X 5.41 X 3.63 MM**

GRADING RESULTS

Carat Weight **1.01 CARAT**

Color Grade **FANCY VIVID BLUE**

Clarity Grade **VS 2**

May 6, 2025
IGI Report Number **LG701506633**
Description **LABORATORY GROWN DIAMOND**
Shape and Cutting Style **SQUARE EMERALD CUT**
Measurements **5.45 X 5.41 X 3.63 MM**

GRADING RESULTS

Carat Weight **1.01 CARAT**

Color Grade **FANCY VIVID BLUE**

Clarity Grade **VS 2**

ADDITIONAL GRADING INFORMATION

Polish **EXCELLENT**

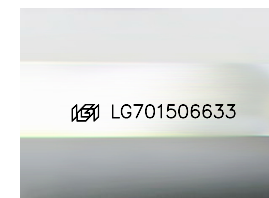
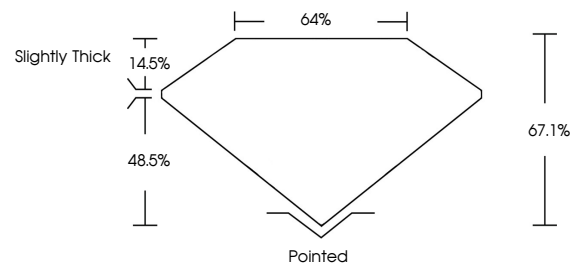
Symmetry **EXCELLENT**

Fluorescence **NONE**

Inscription(s) **LG701506633**

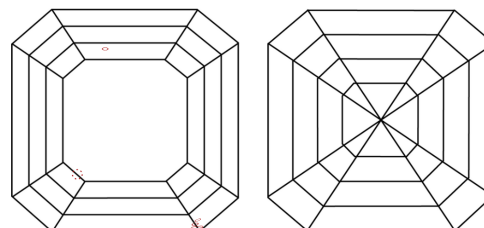
Comments: This Laboratory Grown Diamond was created by High Pressure High Temperature (HPHT) growth process. Indications of post-growth treatment.

PROPORTIONS



Sample Image Used

CLARITY CHARACTERISTICS



KEY TO SYMBOLS

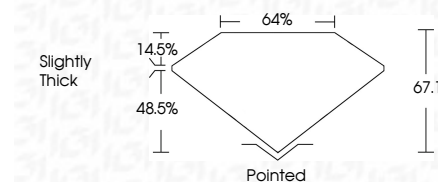
Red symbols indicate internal characteristics.
Green symbols indicate external characteristics.

COLOR

D E F G H I J Faint Very Light Light

CLARITY

IF	VS ¹⁻²	VS ¹⁻²	SI ¹⁻²	I ¹⁻³
Internally Flawless	Very Very Slightly Included	Very Slightly Included	Slightly Included	Included



ADDITIONAL GRADING INFORMATION

Polish **EXCELLENT**

Symmetry **EXCELLENT**

Fluorescence **NONE**

Inscription(s) **LG701506633**

Comments: This Laboratory Grown Diamond was created by High Pressure High Temperature (HPHT) growth process. Indications of post-growth treatment.



IGI



May 6, 2025
IGI Report No LG701506633
SQUARE EMERALD CUT
1.01 CARAT
Carat Weight
Color Grade **FANCY VIVID BLUE**
Clarity Grade **VS 2**
Depth **67.1%**
Table **64%**
Girdle **Slightly Thick**
Culet **Pointed**
Polish **EXCELLENT**
Symmetry **EXCELLENT**
Fluorescence **NONE**
Inscription(s) **LG701506633**

Comments: This Laboratory Grown Diamond was created by High Pressure High Temperature (HPHT) growth process. Indications of post-growth treatment.