



ELECTRONIC COPY

LABORATORY GROWN DIAMOND REPORT

May 8, 2025	
IGI Report Number	LG701505653
Description	LABORATORY GROWN DIAMOND
Shape and Cutting Style	BAGUETTE
Measurements	8.37 X 4.25 X 2.72 MM

GRADING RESULTS

Carat Weight	1.09 CARAT
Color Grade	F
Clarity Grade	VS 2

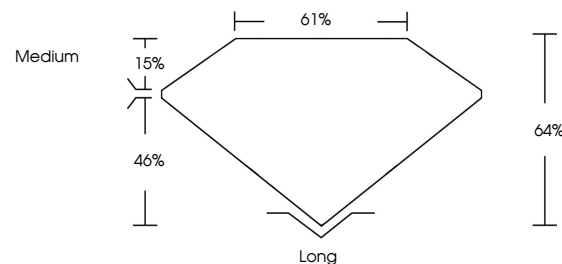
ADDITIONAL GRADING INFORMATION

Polish	EXCELLENT
Symmetry	EXCELLENT
Fluorescence	NONE
Inscription(s)	15 LG701505653

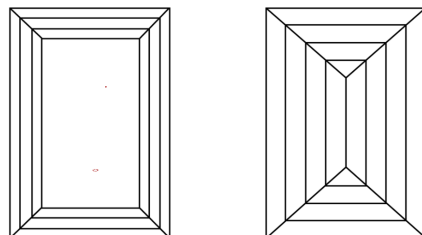
Comments: This Laboratory Grown Diamond was created by Chemical Vapor Deposition (CVD) growth process.
Type IIa

LG701505653
Report verification at igi.org

PROPORTIONS

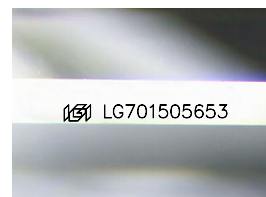


CLARITY CHARACTERISTICS



KEY TO SYMBOLS

Red symbols indicate internal characteristics.
Green symbols indicate external characteristics.



Sample Image Used

COLOR

D E F G H I J Faint Very Light Light

CLARITY

IF	VS ¹⁻²	VS ¹⁻²	SI ¹⁻²	I ¹⁻³
Internally Flawless	Very Very Slightly Included	Very Slightly Included	Slightly Included	Included

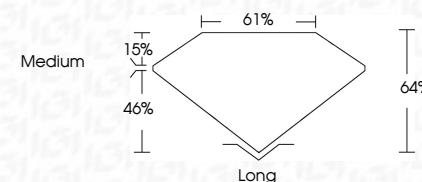
LABORATORY GROWN DIAMOND REPORT



May 8, 2025	
IGI Report Number	LG701505653
Description	LABORATORY GROWN DIAMOND
Shape and Cutting Style	BAGUETTE
Measurements	8.37 X 4.25 X 2.72 MM

GRADING RESULTS

Carat Weight	1.09 CARAT
Color Grade	F
Clarity Grade	VVS 2



ADDITIONAL GRADING INFORMATION

Polish	EXCELLENT
Symmetry	EXCELLENT
Fluorescence	NONE
Inscription(s)	 LG701505653
<p>Comments: This Laboratory Grown Diamond was created by Chemical Vapor Deposition (CVD) growth process.</p> <p>Type IIa</p>	



www.igi.org

© IGI 2020, International Gemological Institute

FD - 10 20



THIS DOCUMENT WAS PRODUCED WITH THE FOLLOWING SECURITY MEASURES: SPECIAL DOCUMENT PAPER, INK SCREENS, WATERMARK, BACKGROUND DESIGNS, HOLOGRAM AND OTHER SECURITY FEATURES NOT LISTED AND DO EXCEED DOCUMENT SECURITY INDUSTRY GUIDELINES

May 8, 2025
GI Report No LG701505653

	GL Report No LG7H16D8693
GABRIELE	
37 x 37 x 2.5 x 2.72 MM	
Coat Weight	1.09 CARAT
Color Grade	F
Cutty Grade	VVS 2
Depth	64%
Table	61%
Girdle	Medium
Claret	Long
Polish	EXCELLENT
Symmetry	EXCELLENT
Fluorescence	NONE
Description(s)	Serial # GTH16D8693

Comments:
This Laboratory Grown Diamond was
created by Chemical Vapor Deposition
(CVD) growth process.