



ELECTRONIC COPY

LG700594213
Report verification at igi.org



April 21, 2025
IGI Report Number **LG700594213**
Description **LABORATORY GROWN DIAMOND**
Shape and Cutting Style **CUSHION MODIFIED BRILLIANT**
Measurements **10.03 X 7.47 X 5.03 MM**
GRADING RESULTS
Carat Weight **3.01 CARATS**
Color Grade **H**
Clarity Grade **VVS 2**

LABORATORY GROWN DIAMOND REPORT

April 21, 2025
IGI Report Number **LG700594213**
Description **LABORATORY GROWN DIAMOND**
Shape and Cutting Style **CUSHION MODIFIED BRILLIANT**
Measurements **10.03 X 7.47 X 5.03 MM**

GRADING RESULTS

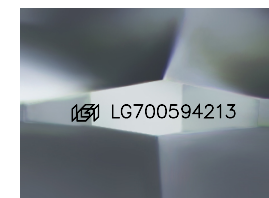
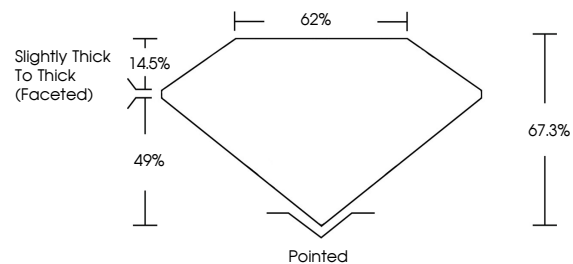
Carat Weight **3.01 CARATS**
Color Grade **H**
Clarity Grade **VVS 2**

ADDITIONAL GRADING INFORMATION

Polish **EXCELLENT**
Symmetry **EXCELLENT**
Fluorescence **NONE**
Inscription(s) **IGI LG700594213**

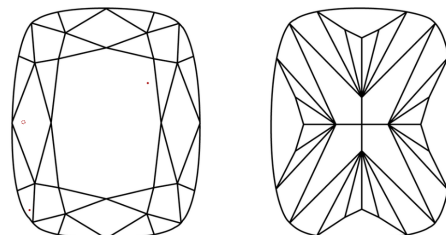
Comments: This Laboratory Grown Diamond was created by Chemical Vapor Deposition (CVD) growth process. Type IIa

PROPORTIONS



Sample Image Used

CLARITY CHARACTERISTICS



KEY TO SYMBOLS

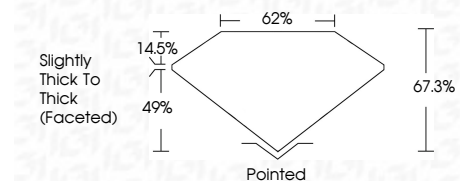
Red symbols indicate internal characteristics.
Green symbols indicate external characteristics.

COLOR

D E F G H I J Faint Very Light Light

CLARITY

IF	VS ¹⁻²	VS ¹⁻²	SI ¹⁻²	I ¹⁻³
Internally Flawless	Very Very Slightly Included	Very Slightly Included	Slightly Included	Included



ADDITIONAL GRADING INFORMATION

Polish **EXCELLENT**
Symmetry **EXCELLENT**
Fluorescence **NONE**
Inscription(s) **IGI LG700594213**
Comments: This Laboratory Grown Diamond was created by Chemical Vapor Deposition (CVD) growth process. Type IIa



April 21, 2025
IGI Report No LG700594213
CUSHION MODIFIED BRILLIANT
10.03 X 7.47 X 5.03 MM
3.01 CARATS
H
VVS 2
67.3%
62%
Slightly Thick To Thick (Faceted)
Pointed
EXCELLENT
EXCELLENT
NONE
IGI LG700594213
Comments: This Laboratory Grown Diamond was created by Chemical Vapor Deposition (CVD) growth process. Type IIa