



**ELECTRONIC COPY**

LG700592807  
Report verification at igi.org



May 9, 2025  
IGI Report Number **LG700592807**  
Description **LABORATORY GROWN DIAMOND**  
Shape and Cutting Style **CUSHION MODIFIED BRILLIANT**  
Measurements **10.31 X 8.57 X 5.71 MM**  
**GRADING RESULTS**  
Carat Weight **4.28 CARATS**  
Color Grade **FANCY VIVID YELLOW**  
Clarity Grade **VS 2**

May 9, 2025  
IGI Report Number **LG700592807**  
Description **LABORATORY GROWN DIAMOND**  
Shape and Cutting Style **CUSHION MODIFIED BRILLIANT**  
Measurements **10.31 X 8.57 X 5.71 MM**

**GRADING RESULTS**

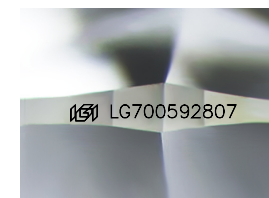
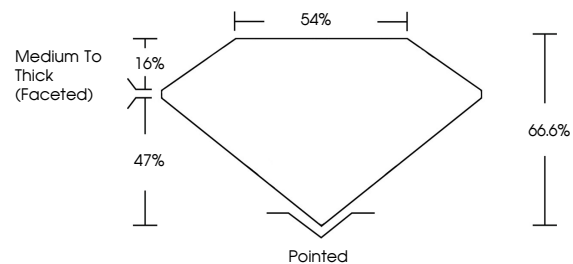
Carat Weight **4.28 CARATS**  
Color Grade **FANCY VIVID YELLOW**  
Clarity Grade **VS 2**

**ADDITIONAL GRADING INFORMATION**

Polish **EXCELLENT**  
Symmetry **EXCELLENT**  
Fluorescence **NONE**  
Inscription(s) **IGI LG700592807**

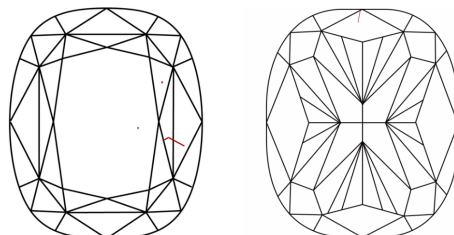
Comments: This Laboratory Grown Diamond was created by Chemical Vapor Deposition (CVD) growth process.

**PROPORTIONS**



Sample Image Used

**CLARITY CHARACTERISTICS**



**KEY TO SYMBOLS**

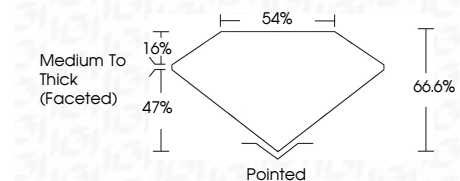
Red symbols indicate internal characteristics.  
Green symbols indicate external characteristics.

**COLOR**

D E F G H I J Faint Very Light Light

**CLARITY**

IF	VS <sup>1-2</sup>	VS <sup>1-2</sup>	SI <sup>1-2</sup>	I <sup>1-3</sup>
Internally Flawless	Very Very Slightly Included	Very Slightly Included	Slightly Included	Included



**ADDITIONAL GRADING INFORMATION**

Polish **EXCELLENT**  
Symmetry **EXCELLENT**  
Fluorescence **NONE**  
Inscription(s) **IGI LG700592807**  
Comments: This Laboratory Grown Diamond was created by Chemical Vapor Deposition (CVD) growth process.



May 9, 2025  
IGI Report No LG700592807  
**CUSHION MODIFIED BRILLIANT**  
4.28 CARATS  
Carat Weight  
Color Grade **FANCY VIVID YELLOW**  
Clarity Grade **VS 2**  
Depth **66.6%**  
Table **16%**  
Girdle **Medium To Thick (Faceted)**  
Culet **Pointed**  
Polish **EXCELLENT**  
Symmetry **EXCELLENT**  
Fluorescence **NONE**  
Inscription(s) **IGI LG700592807**  
Comments: This Laboratory Grown Diamond was created by Chemical Vapor Deposition (CVD) growth process.