



**ELECTRONIC COPY**

LG700592364  
Report verification at [igi.org](http://igi.org)



May 10, 2025

IGI Report Number **LG700592364**

Description **LABORATORY GROWN DIAMOND**

Shape and Cutting Style **OVAL MIXED CUT**

Measurements **20.38 X 13.20 X 7.28 MM**

**GRADING RESULTS**

Carat Weight **15.16 CARATS**

Color Grade **FANCY VIVID PINK**

Clarity Grade **VS 1**

May 10, 2025  
IGI Report Number **LG700592364**  
Description **LABORATORY GROWN DIAMOND**  
Shape and Cutting Style **OVAL MIXED CUT**  
Measurements **20.38 X 13.20 X 7.28 MM**

**GRADING RESULTS**

Carat Weight **15.16 CARATS**

Color Grade **FANCY VIVID PINK**

Clarity Grade **VS 1**

**ADDITIONAL GRADING INFORMATION**

Polish **EXCELLENT**

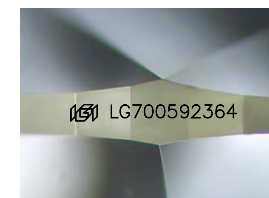
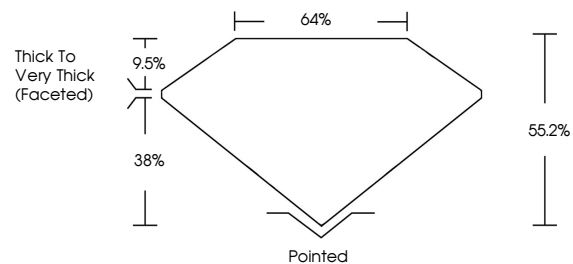
Symmetry **EXCELLENT**

Fluorescence **SLIGHT**

Inscription(s) **LG700592364**

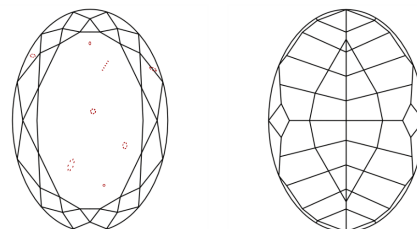
Comments: This Laboratory Grown Diamond was created by Chemical Vapor Deposition (CVD) growth process.  
Indications of post-growth treatment.

**PROPORTIONS**



Sample Image Used

**CLARITY CHARACTERISTICS**



**KEY TO SYMBOLS**

Red symbols indicate internal characteristics.  
Green symbols indicate external characteristics.

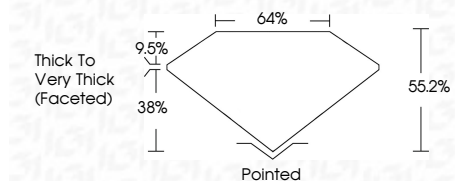
**COLOR**

D E F G H I J Faint Very Light Light

**CLARITY**

IF VS<sup>1-2</sup> VS<sup>1-2</sup> SI<sup>1-2</sup> I<sup>1-3</sup>

Internally Flawless Very Very Slightly Included Very Slightly Included Slightly Included Included



**ADDITIONAL GRADING INFORMATION**

Polish **EXCELLENT**

Symmetry **EXCELLENT**

Fluorescence **SLIGHT**

Inscription(s) **LG700592364**

Comments: This Laboratory Grown Diamond was created by Chemical Vapor Deposition (CVD) growth process.  
Indications of post-growth treatment.



**IGI**

May 10, 2025  
IGI Report No LG700592364  
OVAL MIXED CUT  
15.16 CARATS  
Carat Weight  
Color Grade FANCY VIVID PINK  
Clarity Grade VS 1  
Depth 55.2%  
Table 9.5%  
Girdle Thick to Very Thick (Faceted)  
Culet Pointed  
Polish EXCELLENT  
Symmetry EXCELLENT  
Fluorescence SLIGHT  
Inscription(s) LG700592364

Comments: This Laboratory Grown Diamond was created by Chemical Vapor Deposition (CVD) growth process.  
Indications of post-growth treatment.