



**ELECTRONIC COPY**

LG700592332  
Report verification at [igi.org](http://igi.org)



May 26, 2025  
IGI Report Number **LG700592332**  
Description **LABORATORY GROWN DIAMOND**  
Shape and Cutting Style **MODIFIED EMERALD CUT**  
Measurements **8.92 X 5.92 X 3.62 MM**  
**GRADING RESULTS**  
Carat Weight **1.81 CARAT**  
Color Grade **FANCY INTENSE YELLOW**  
Clarity Grade **VS 1**

**LABORATORY GROWN DIAMOND REPORT**

May 26, 2025  
IGI Report Number **LG700592332**  
Description **LABORATORY GROWN DIAMOND**  
Shape and Cutting Style **MODIFIED EMERALD CUT**  
Measurements **8.92 X 5.92 X 3.62 MM**

**GRADING RESULTS**

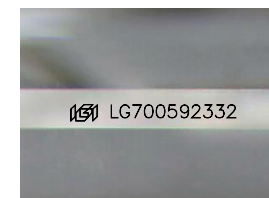
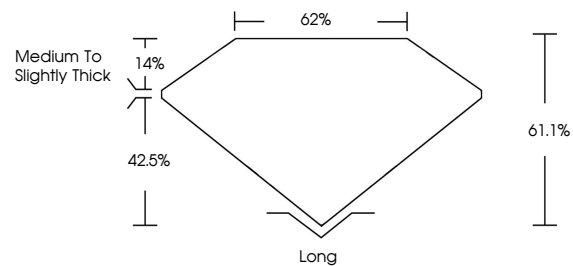
Carat Weight **1.81 CARAT**  
Color Grade **FANCY INTENSE YELLOW**  
Clarity Grade **VS 1**

**ADDITIONAL GRADING INFORMATION**

Polish **EXCELLENT**  
Symmetry **EXCELLENT**  
Fluorescence **NONE**  
Inscription(s) **LG700592332**

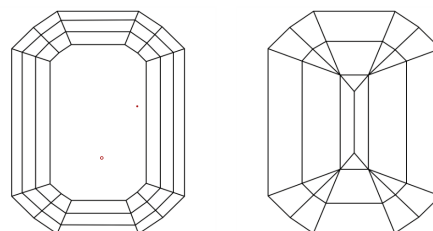
Comments: This Laboratory Grown Diamond was created by Chemical Vapor Deposition (CVD) growth process.

**PROPORTIONS**



Sample Image Used

**CLARITY CHARACTERISTICS**



**KEY TO SYMBOLS**

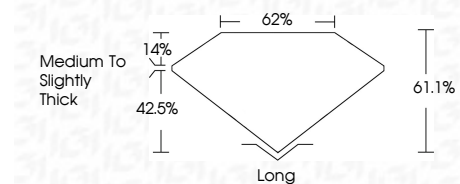
Red symbols indicate internal characteristics.  
Green symbols indicate external characteristics.

**COLOR**

D E F G H I J Faint Very Light Light

**CLARITY**

IF	WS <sup>1-2</sup>	VS <sup>1-2</sup>	SI <sup>1-2</sup>	I <sup>1-3</sup>
Internally Flawless	Very Very Slightly Included	Very Slightly Included	Slightly Included	Included



**ADDITIONAL GRADING INFORMATION**

Polish **EXCELLENT**  
Symmetry **EXCELLENT**  
Fluorescence **NONE**  
Inscription(s) **LG700592332**  
Comments: This Laboratory Grown Diamond was created by Chemical Vapor Deposition (CVD) growth process.



May 26, 2025  
IGI Report No **LG700592332**  
**MODIFIED EMERALD CUT**  
Carat Weight **1.81 CARAT**  
Color Grade **FANCY INTENSE YELLOW**  
Clarity Grade **VS 1**  
Depth **61.1%**  
Table **62%**  
Girdle **Medium to Slightly Thick**  
Culet **Long**  
Polish **EXCELLENT**  
Symmetry **EXCELLENT**  
Fluorescence **NONE**  
Inscription(s) **LG700592332**  
Comments: This Laboratory Grown Diamond was created by Chemical Vapor Deposition (CVD) growth process.