



**ELECTRONIC COPY**

LG700591685  
Report verification at igi.org



May 6, 2025

IGI Report Number **LG700591685**

Description **LABORATORY GROWN DIAMOND**

Shape and Cutting Style **ROUND BRILLIANT**

Measurements **7.12 - 7.19 X 4.71 MM**

**GRADING RESULTS**

Carat Weight **1.53 CARAT**

Color Grade **FANCY VIVID GREEN**

Clarity Grade **VS 1**

Cut Grade **GOOD**

May 6, 2025

IGI Report Number **LG700591685**

Description **LABORATORY GROWN DIAMOND**

Shape and Cutting Style **ROUND BRILLIANT**

Measurements **7.12 - 7.19 X 4.71 MM**

**GRADING RESULTS**

Carat Weight **1.53 CARAT**

Color Grade **FANCY VIVID GREEN**

Clarity Grade **VS 1**

Cut Grade **GOOD**

**ADDITIONAL GRADING INFORMATION**

Polish **VERY GOOD**

Symmetry **VERY GOOD**

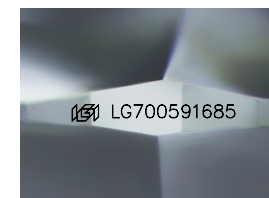
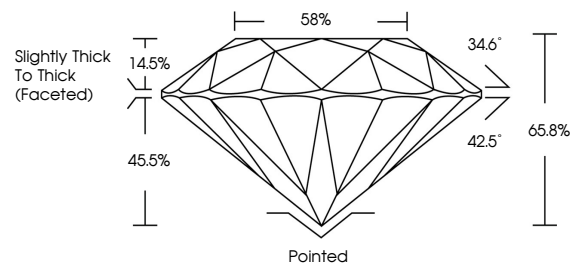
Fluorescence **NONE**

Inscription(s) **LG700591685**

Comments: This Laboratory Grown Diamond was created by Chemical Vapor Deposition (CVD) growth process.

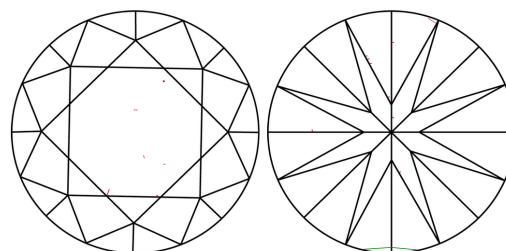
Indications of post-growth treatment.

**PROPORTIONS**



Sample Image Used

**CLARITY CHARACTERISTICS**



**KEY TO SYMBOLS**

Red symbols indicate internal characteristics.  
Green symbols indicate external characteristics.

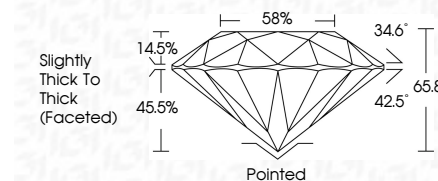
**COLOR**

D E F G H I J Faint Very Light Light

**CLARITY**

IF WS<sup>1-2</sup> VS<sup>1-2</sup> SI<sup>1-2</sup> I<sup>1-3</sup>

Internally Flawless Very Very Slightly Included Very Slightly Included Slightly Included Included



**ADDITIONAL GRADING INFORMATION**

Polish **VERY GOOD**

Symmetry **VERY GOOD**

Fluorescence **NONE**

Inscription(s) **LG700591685**

Comments: This Laboratory Grown Diamond was created by Chemical Vapor Deposition (CVD) growth process. Indications of post-growth treatment.



**IGI**



May 6, 2025	IGI Report No LG700591685	1.53 CARAT	FANCY VIVID GREEN	VS 1	GOOD	66.8%	58%	Slightly Thick To Thick (Faceted)	Pointed	VERY GOOD	VERY GOOD	NONE	LG700591685
ROUND BRILLIANT	7.12 - 7.19 X 4.71 MM	Carat Weight	Color Grade	Clarity Grade	Cut Grade	Depth	Table	Girdle	Culet	Polish	Symmetry	Fluorescence	Inscription(s)

Comments: This Laboratory Grown Diamond was created by Chemical Vapor Deposition (CVD) growth process. Indications of post-growth treatment.