



**ELECTRONIC COPY**

LG700589190  
Report verification at igi.org



April 26, 2025

IGI Report Number **LG700589190**

Description **LABORATORY GROWN DIAMOND**

Shape and Cutting Style **CUT CORNERED  
RECTANGULAR MODIFIED  
BRILLIANT**

Measurements **14.30 X 9.79 X 6.31 MM**

**GRADING RESULTS**

Carat Weight **7.60 CARATS**

Color Grade **E**

Clarity Grade **VS 1**

April 26, 2025

IGI Report Number **LG700589190**

Description **LABORATORY GROWN DIAMOND**

Shape and Cutting Style **CUT CORNERED RECTANGULAR  
MODIFIED BRILLIANT**

Measurements **14.30 X 9.79 X 6.31 MM**

**GRADING RESULTS**

Carat Weight **7.60 CARATS**

Color Grade **E**

Clarity Grade **VS 1**

**ADDITIONAL GRADING INFORMATION**

Polish **EXCELLENT**

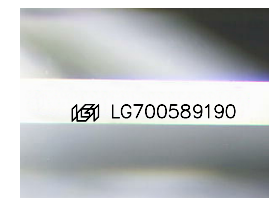
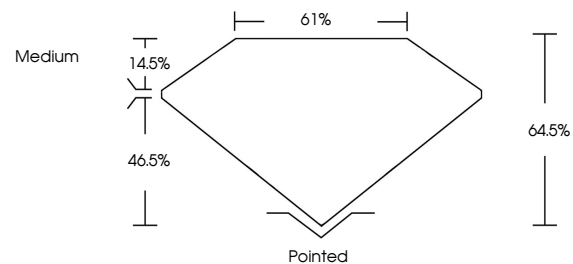
Symmetry **EXCELLENT**

Fluorescence **NONE**

Inscription(s) **IGI LG700589190**

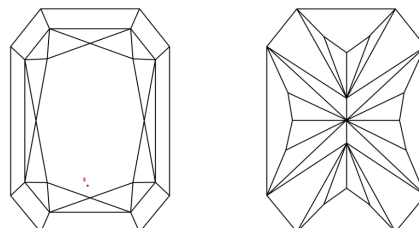
Comments: This Laboratory Grown Diamond was created by Chemical Vapor Deposition (CVD) growth process. Type IIa

**PROPORTIONS**



Sample Image Used

**CLARITY CHARACTERISTICS**



**KEY TO SYMBOLS**

Red symbols indicate internal characteristics.  
Green symbols indicate external characteristics.

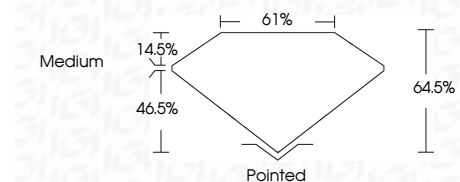
**COLOR**

D E F G H I J Faint Very Light Light

**CLARITY**

IF WS<sup>1-2</sup> VS<sup>1-2</sup> SI<sup>1-2</sup> I<sup>1-3</sup>

Internally Flawless Very Very Slightly Included Very Slightly Included Slightly Included Included



**ADDITIONAL GRADING INFORMATION**

Polish **EXCELLENT**

Symmetry **EXCELLENT**

Fluorescence **NONE**

Inscription(s) **IGI LG700589190**

Comments: This Laboratory Grown Diamond was created by Chemical Vapor Deposition (CVD) growth process. Type IIa



**IGI**



April 26, 2025  
IGI Report No LG700589190  
CUT CORNERED RECT. MODIFIED BRILLIANT  
14.30 X 9.79 X 6.31 MM  
7.60 CARATS  
E  
VS 1  
64.5%  
46.5%  
61%  
Medium  
Pointed  
EXCELLENT  
EXCELLENT  
NONE  
IGI LG700589190

Comments: This Laboratory Grown Diamond was created by Chemical Vapor Deposition (CVD) growth process. Type IIa