



**ELECTRONIC COPY**

LG700585208  
Report verification at igi.org



May 5, 2025  
IGI Report Number **LG700585208**  
Description **LABORATORY GROWN DIAMOND**  
Shape and Cutting Style **CUSHION MODIFIED BRILLIANT**  
Measurements **10.70 X 8.40 X 5.56 MM**  
**GRADING RESULTS**  
Carat Weight **4.09 CARATS**  
Color Grade **F**  
Clarity Grade **VS 1**

May 5, 2025  
IGI Report Number **LG700585208**  
Description **LABORATORY GROWN DIAMOND**  
Shape and Cutting Style **CUSHION MODIFIED BRILLIANT**  
Measurements **10.70 X 8.40 X 5.56 MM**

**GRADING RESULTS**

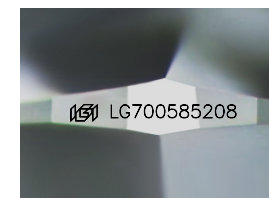
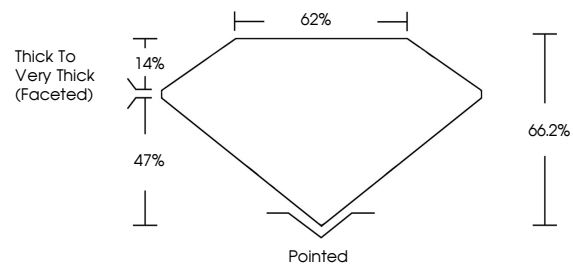
Carat Weight **4.09 CARATS**  
Color Grade **F**  
Clarity Grade **VS 1**

**ADDITIONAL GRADING INFORMATION**

Polish **EXCELLENT**  
Symmetry **EXCELLENT**  
Fluorescence **NONE**  
Inscription(s) **LG700585208**

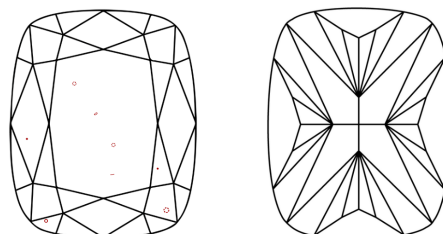
Comments: This Laboratory Grown Diamond was created by Chemical Vapor Deposition (CVD) growth process. Type IIa

**PROPORTIONS**



Sample Image Used

**CLARITY CHARACTERISTICS**



**KEY TO SYMBOLS**

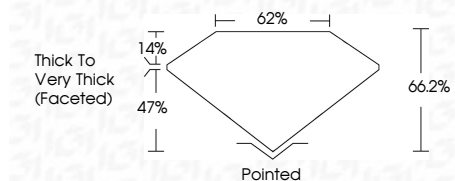
Red symbols indicate internal characteristics.  
Green symbols indicate external characteristics.

**COLOR**

D E F G H I J Faint Very Light Light

**CLARITY**

IF	VS <sup>1-2</sup>	VS <sup>1-2</sup>	SI <sup>1-2</sup>	I <sup>1-3</sup>
Internally Flawless	Very Very Slightly Included	Very Slightly Included	Slightly Included	Included



**ADDITIONAL GRADING INFORMATION**

Polish **EXCELLENT**  
Symmetry **EXCELLENT**  
Fluorescence **NONE**  
Inscription(s) **LG700585208**  
Comments: This Laboratory Grown Diamond was created by Chemical Vapor Deposition (CVD) growth process. Type IIa



May 5, 2025  
IGI Report No **LG700585208**  
**CUSHION MODIFIED BRILLIANT**  
**10.70 X 8.40 X 5.56 MM**  
**4.09 CARATS**  
F  
Carat Weight  
Color Grade  
Clarity Grade  
Depth  
Table  
Girdle  
Thick to Very Thick (Faceted)  
Culet  
Pointed  
Polish  
Symmetry  
Fluorescence  
Inscription(s)  
**EXCELLENT**  
**EXCELLENT**  
**EXCELLENT**  
**NONE**  
**VS 1**  
**66.2%**  
**47%**  
 **LG700585208**  
Comments: This Laboratory Grown Diamond was created by Chemical Vapor Deposition (CVD) growth process. Type IIa