



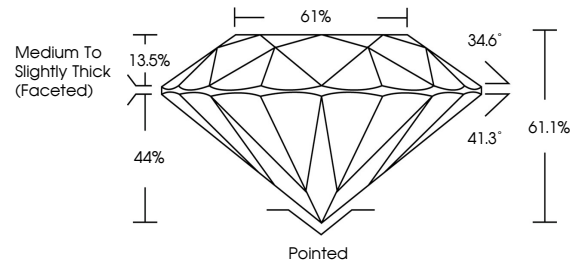
**INTERNATIONAL
GEMOLOGICAL
INSTITUTE**

ELECTRONIC COPY

LABORATORY GROWN DIAMOND REPORT

LG700574100
Report verification at igi.org

PROPORTIONS



Sample Image Used

COLOR

D E F G H I J Faint Very Light Light

CLARITY

IF WS¹⁻² VS¹⁻² SI¹⁻² I¹⁻³

Internally Flawless	Very Very Slightly Included	Very Slightly Included	Slightly Included	Included
------------------------	--------------------------------	---------------------------	----------------------	----------



© IGI 2020, International Gemological Institute

FD - 10 20

www.igi.org

LABORATORY GROWN DIAMOND REPORT



May 3, 2025

IGI Report Number **LG700574100**

Description	LABORATORY GROWN DIAMOND
-------------	--------------------------

Shape and Cutting Style **ROUND BRILLIANT**

Measurements 9.73 - 9.78 X 5.96 MM

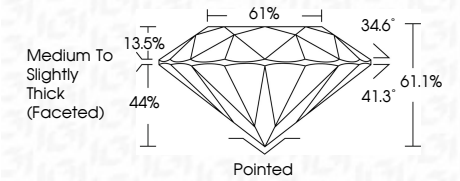
GRADING RESULTS

Carat Weight **3.50 CARATS**

Color Grade	E
-------------	---

Clarity Grade VS 2

Cut Grade **EXCELLENT**



ADDITIONAL GRADING INFORMATION

Polish **EXCELLENT**Symmetry **EXCELLENT**Fluorescence **NONE**Inscription(s) **151** LG700574100

Comments: This Laboratory Grown Diamond was created by Chemical Vapor Deposition (CVD) growth process.
Type IIa



IGI

May 3, 2025	Report No. LG700574100	
ROUND BRILLIANT	3.50 CARATS	
9.73 x 9.78 x 5.56 MM	VS.2	
Carat Weight	Color Grade	EXCELLENT
Color Grade	Clarity Grade	61.1%
Cut Grade	Depth	61%
Table	Girdle	Medium to Slightly Thick (Faceted)
Culet	Polish	Polished
Symmetry	Fluorescence	EXCELLENT
Inscriptions(s)		NONE
		681 LG700574100
Comments: This Laboratory Grown Diamond was created by Chemical Vapor Deposition (CVD) growth process. Type IId		