

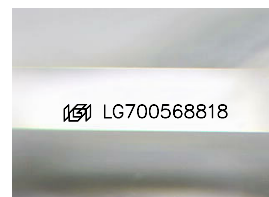
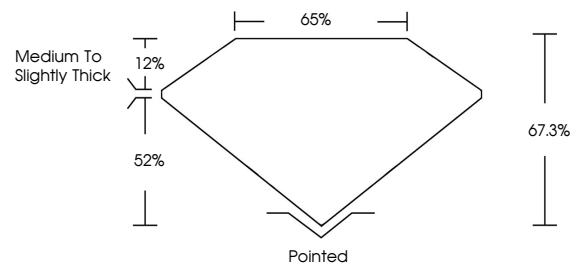


ELECTRONIC COPY

LABORATORY GROWN DIAMOND REPORT

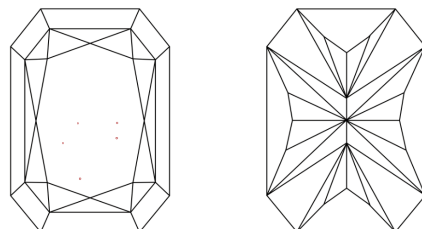
LG700568818
Report verification at igi.org

PROPORTIONS



Sample Image Used

CLARITY CHARACTERISTICS



KEY TO SYMBOLS

Red symbols indicate internal characteristics.
Green symbols indicate external characteristics.

COLOR

D E F G H I J Faint Very Light Light

CLARITY

IF	VS ¹⁻²	VS ¹⁻²	SI ¹⁻²	I ¹⁻³
Internally Flawless	Very Very Slightly Included	Very Slightly Included	Slightly Included	Included

LABORATORY GROWN DIAMOND REPORT



April 22, 2025

IGI Report Number **LG700568818**Description **LABORATORY GROWN DIAMOND**

Shape and Cutting Style

CUT CORNERED
RECTANGULAR MODIFIED
BRILLIANT

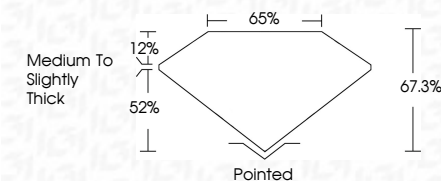
Measurements **8.31 X 5.68 X 3.82 MM**

GRADING RESULTS

Carat Weight 1.51 CARAT

Color Grade E

Clarity Grade VS 2



ADDITIONAL GRADING INFORMATION

Polish **EXCELLENT**Symmetry **EXCELLENT**Fluorescence **NONE**Inscription(s)  LG700568818

Comments: This Laboratory Grown Diamond was created by Chemical Vapor Deposition (CVD) growth process.
Type IIa



IG



© IGI 2020, International Gemological Institute

FD - 10 20

www.igi.org

THIS DOCUMENT WAS PRODUCED WITH THE FOLLOWING SECURITY MEASURES: SPECIAL DOCUMENT PAPER, INK SCREENS, WATERMARK, BACKGROUND DESIGNS, HOLOGRAM AND OTHER SECURITY FEATURES NOT LISTED AND DO EXCEED DOCUMENT SECURITY INDUSTRY GUIDELINES

April 22, 2025	GI Report No. LG70056818	1.61 CARAT	VS 2	Medium to Slightly Thick	Polished	NONE	#69 LG70056818	Comments: This Laboratory Grown Diamond was created by Chemical Vapor Deposition (CVD) growth process. Type IIa
GI CUT CORNERED RECT. MODIFIED BRILLIANT	3.31 X 5.68 X 3.82 MM	Carat Weight	67.3%		Excellent			
	Color Grade	Clarity Grade	Depth		Excellent			
		Table	Grain		Fluorescence			
					Inscriptions(s)			