

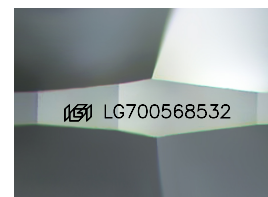
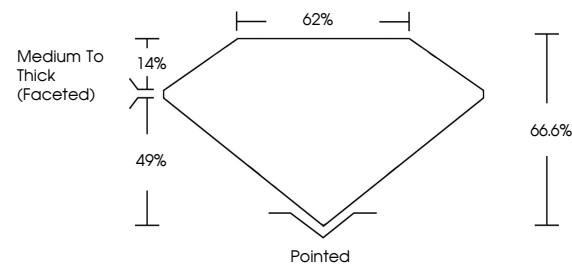


ELECTRONIC COPY

LABORATORY GROWN DIAMOND REPORT

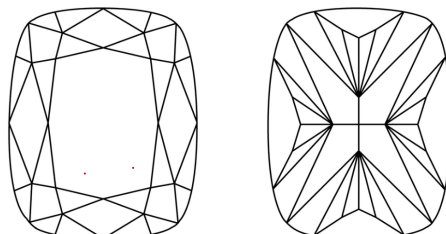
LG700568532
Report verification at igi.org

PROPORTIONS



Sample Image Used

CLARITY CHARACTERISTICS



KEY TO SYMBOLS

Red symbols indicate internal characteristics.
Green symbols indicate external characteristics.

COLOR

D E F G H I J Faint Very Light Light

CLARITY

IF	VS ¹⁻²	VS ¹⁻²	SI ¹⁻²	I ¹⁻³
Internally Flawless	Very Very Slightly Included	Very Slightly Included	Slightly Included	Included

LABORATORY GROWN DIAMOND REPORT



April 24, 2025

IGI Report Number **LG700568532**Description **LABORATORY GROWN DIAMOND**

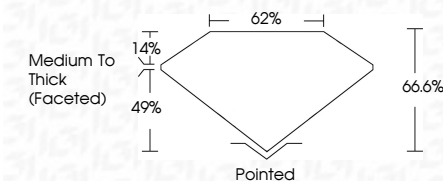
Shape and Cutting Style **CUSHION MODIFIED
BRILLIANT**

Measurements 10.00 X 7.75 X 5.16 MM

GRADING RESULTS

Carat Weight **3.09 CARATS**

Color Grade E

Clarity Grade **VVS 2**

ADDITIONAL GRADING INFORMATION

Polish **EXCELLENT**Symmetry **EXCELLENT**Fluorescence **NONE**Inscription(s) LG700568532

Comments: This Laboratory Grown Diamond was created by Chemical Vapor Deposition (CVD) growth process.
Type IIa



www.igi.org

© IGI 2020, International Gemological Institute

FD - 10 20



THIS DOCUMENT WAS PRODUCED WITH THE FOLLOWING SECURITY MEASURES: SPECIAL DOCUMENT PAPER, INK SCREENS, WATERMARK, BACKGROUND DESIGNS, HOLOGRAM AND OTHER SECURITY FEATURES NOT LISTED AND DO EXCEED DOCUMENT SECURITY INDUSTRY GUIDELINES

April 24, 2025
GI Report No LG700568532
CUSHION MODIFIED BRILLIANT

10.00 X 7.75 X 5.16 MM	3.09 CARATS
Carat Weight	E
Color Grade	VS 2
Clarity Grade	66.6%
Depth	66%
Table	Medium to Thick (faceted)
Girdle	
Culet	Pointed
Polish	EXCELLENT
Symmetry	EXCELLENT
Fluorescence	NONE
Proportions (%)	See ICT70054852

Comments:
This Laboratory Grown Diamond was created by Chemical Vapor Deposition (CVD) growth process.