

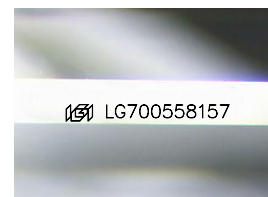
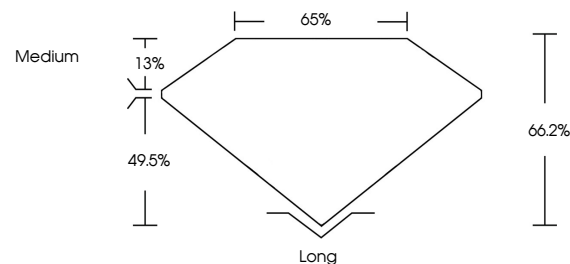


ELECTRONIC COPY

LABORATORY GROWN DIAMOND REPORT

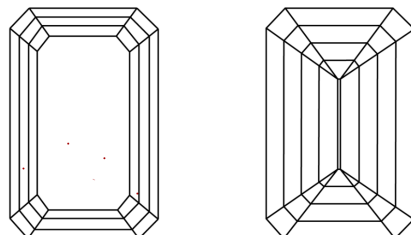
LG700558157
Report verification at igi.org

PROPORTIONS



Sample Image Used

CLARITY CHARACTERISTICS



KEY TO SYMBOLS

Red symbols indicate internal characteristics.
Green symbols indicate external characteristics.

COLOR

D E F G H I J Faint Very Light Light

CLARITY

IF	VS ¹⁻²	VS ¹⁻²	SI ¹⁻²	I ¹⁻³
Internally Flawless	Very Very Slightly Included	Very Slightly Included	Slightly Included	Included

LABORATORY GROWN DIAMOND REPORT



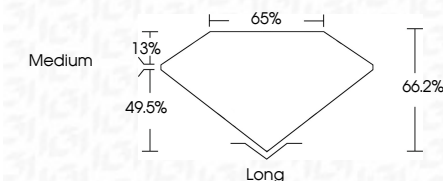
April 17, 2025

IGI Report Number **LG700558157**Description **LABORATORY GROWN DIAMOND**Shape and Cutting Style **EMERALD CUT**

Measurements **14.61 X 10.45 X 6.92 MM**

GRADING RESULTS

Carat Weight 10.31 CARATS

Color Grade EClarity Grade **VS 2**

ADDITIONAL GRADING INFORMATION

Polish EXCELLENT

Symmetry **EXCELLENT**Fluorescence **NONE**Inscription(s) LG700558157

Comments: This Laboratory Grown Diamond was created by Chemical Vapor Deposition (CVD) growth process.
Type IIa



www.igi.org

© IGI 2020, International Gemological Institute

FD - 10 20



THIS DOCUMENT WAS PRODUCED WITH THE FOLLOWING SECURITY MEASURES: SPECIAL DOCUMENT PAPER, INK SCREENS, WATERMARK, BACKGROUND DESIGNS, HOLOGRAM AND OTHER SECURITY FEATURES NOT LISTED AND DO EXCEED DOCUMENT SECURITY INDUSTRY GUIDELINES

April 17, 2025
 IGI Report No LG700558157
 EMERALD CITY

14.61 X 10.45 X 6.92 MM	Carat Weight	10.31 CARATS
	Color Grade	E
	Clarity Grade	VS 2
	Depth	66.2%
	Table	65%
	Girdle	Medium
	Culet	Long
	Polish	EXCELLENT
	Symmetry	EXCELLENT
	Fluorescence	NONE
	Measurements (mm)	6.92 (10.45/10.45/6.92)

Comments:
This Laboratory Grown Diamond was created by Chemical Vapor Deposition (CVD) growth process.