

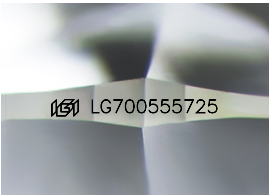
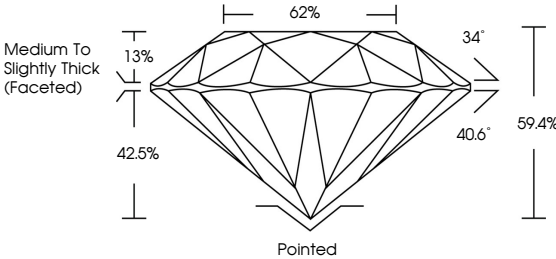


**INTERNATIONAL
GEMOLOGICAL
INSTITUTE**

ELECTRONIC COPY

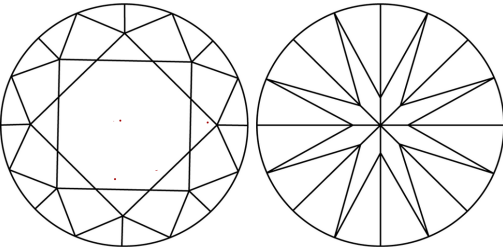
Report verification at igi.org

PROPORTIONS



Sample Image Used

CLARITY CHARACTERISTICS



KEY TO SYMBOLS

Red symbols indicate internal characteristics.
Green symbols indicate external characteristics.

COLOR

D E F G H I J Faint Very Light Light

CLARITY

IF VWS¹⁻² VS¹⁻² SI¹⁻² | 1.

Internally Flawless	Very Very Slightly Included	Very Slightly Included	Slightly Included	Included
---------------------	-----------------------------	------------------------	-------------------	----------



© IGI 2020, International Gemological Institute

FD - 10 20

www.igi.org



THIS DOCUMENT WAS PRODUCED WITH THE FOLLOWING SECURITY MEASURES: SPECIAL DOCUMENT PAPER, INK SCREENS, WATERMARK, BACKGROUND DESIGNS, HOLOGRAM AND OTHER SECURITY FEATURES NOT LISTED AND DO EXCEED DOCUMENT SECURITY INDUSTRY GUIDELINES

LABORATORY GROWN DIAMOND REPORT



May 13, 2025

IGI Report Number **LG700555725**

Description	LABORATORY GROWN DIAMOND
-------------	--------------------------

Shape and Cutting Style **ROUND BRILLIANT**

Measurements 11.08 - 11.17 X 6.62 MM

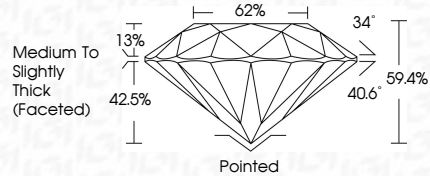
GRADING RESULTS

Carat Weight **5.05 CARATS**

Color Grade G

Clarity Grade WS 2

Cut Grade **EXCELLENT**



ADDITIONAL GRADING INFORMATION

Polish EXCELLENCE

Symmetry **EXCELLENCE**

Fluorescence NON

Inscription(s) **131** LG70055572

Comments: This Laboratory Grown Diamond was created by Chemical Vapor Deposition (CVD) growth process. Type IIa. Indications of post-growth treatment.



IGI

May 13, 2025	GI Report No. G270555725	ROUND BRILLIANT	11.08 x 11.17 x 6.62 MM	5.06 CARATS G	VVS 2	EXCELLENT	59.4%	62%	Medium to slightly thick (rounded)	Polished	EXCELLENT	EXCELLENT	NONE	g31 G270555725	Comments: Very Clean Diamond was created by Growth Diamond via CVD growth process. Type Ila. Indications of post-growth treatment.
--------------	--------------------------	-----------------	-------------------------	------------------	-------	-----------	-------	-----	------------------------------------	----------	-----------	-----------	------	----------------	---