



ELECTRONIC COPY

LABORATORY GROWN DIAMOND REPORT

April 23, 2025
IGI Report Number LG700547964
Description LABORATORY GROWN DIAMOND
Shape and Cutting Style TRIANGULAR MODIFIED BRILLIANT
Measurements 8.60 X 10.61 X 4.69 MM

GRADING RESULTS

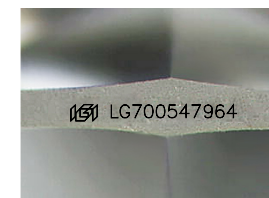
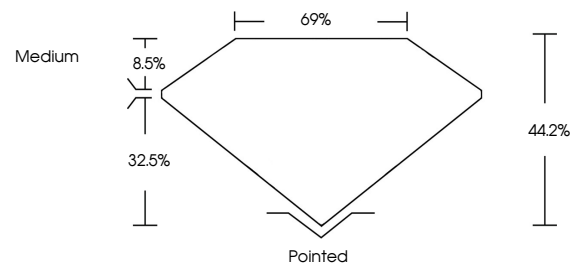
Carat Weight 2.00 CARATS
Color Grade D
Clarity Grade VVS 1

ADDITIONAL GRADING INFORMATION

Polish EXCELLENT
Symmetry EXCELLENT
Fluorescence NONE
Inscription(s) LG700547964

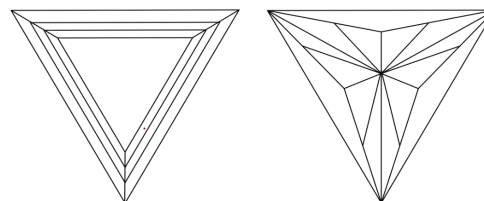
Comments: This Laboratory Grown Diamond was created by Chemical Vapor Deposition (CVD) growth process.
Type IIa

PROPORTIONS



Sample Image Used

CLARITY CHARACTERISTICS



KEY TO SYMBOLS

Red symbols indicate internal characteristics.
Green symbols indicate external characteristics.

COLOR

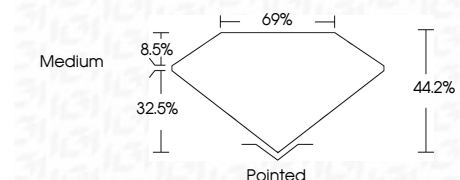
D E F G H I J Faint Very Light Light

CLARITY

IF VVS¹⁻² VS¹⁻² SI¹⁻² I¹⁻³
Internally Flawless Very Very Slightly Included Very Slightly Included Slightly Included Included



April 23, 2025
IGI Report Number LG700547964
Description LABORATORY GROWN DIAMOND
Shape and Cutting Style TRIANGULAR MODIFIED BRILLIANT
Measurements 8.60 X 10.61 X 4.69 MM
GRADING RESULTS
Carat Weight 2.00 CARATS
Color Grade D
Clarity Grade VVS 1



ADDITIONAL GRADING INFORMATION

Polish EXCELLENT
Symmetry EXCELLENT
Fluorescence NONE
Inscription(s) LG700547964
Comments: This Laboratory Grown Diamond was created by Chemical Vapor Deposition (CVD) growth process.
Type IIa



IGI



April 23, 2025
IGI Report No LG700547964
LABORATORY GROWN DIAMOND
8.60 X 10.61 X 4.69 MM
2.00 CARATS
D
VVS 1
44.2%
69%
Medium
Pointed
EXCELLENT
EXCELLENT
NONE
IGI LG700547964
Comments: This Laboratory Grown Diamond was created by Chemical Vapor Deposition (CVD) growth process.
Type IIa