



**ELECTRONIC COPY**

LG700545778  
Report verification at igi.org



April 24, 2025

IGI Report Number **LG700545778**

Description **LABORATORY GROWN DIAMOND**

Shape and Cutting Style **CUSHION BRILLIANT**

Measurements **6.95 X 5.42 X 3.58 MM**

**GRADING RESULTS**

Carat Weight **1.07 CARAT**

Color Grade **FANCY PINK**

Clarity Grade **VS 2**

April 24, 2025  
IGI Report Number **LG700545778**  
Description **LABORATORY GROWN DIAMOND**  
Shape and Cutting Style **CUSHION BRILLIANT**  
Measurements **6.95 X 5.42 X 3.58 MM**

**GRADING RESULTS**

Carat Weight **1.07 CARAT**

Color Grade **FANCY PINK**

Clarity Grade **VS 2**

**ADDITIONAL GRADING INFORMATION**

Polish **EXCELLENT**

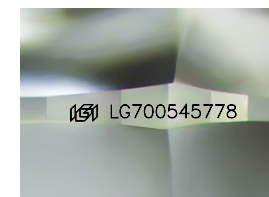
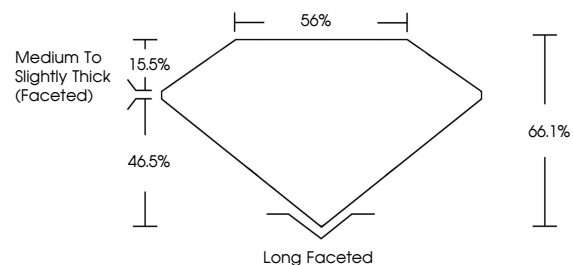
Symmetry **EXCELLENT**

Fluorescence **SLIGHT**

Inscription(s) **LG700545778**

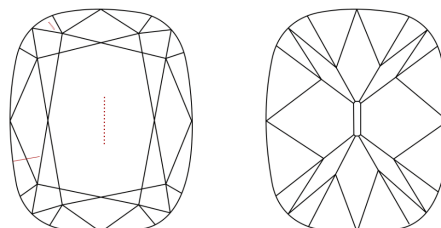
Comments: This Laboratory Grown Diamond was created by Chemical Vapor Deposition (CVD) growth process. Indications of post-growth treatment.

**PROPORTIONS**



Sample Image Used

**CLARITY CHARACTERISTICS**



**KEY TO SYMBOLS**

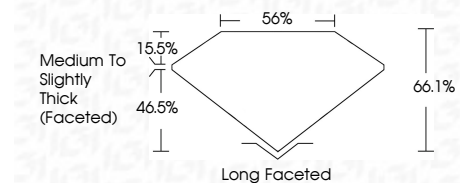
Red symbols indicate internal characteristics.  
Green symbols indicate external characteristics.

**COLOR**

D E F G H I J Faint Very Light Light

**CLARITY**

IF	VS <sup>1-2</sup>	VS <sup>1-2</sup>	SI <sup>1-2</sup>	I <sup>1-3</sup>
Internally Flawless	Very Very Slightly Included	Very Slightly Included	Slightly Included	Included



**ADDITIONAL GRADING INFORMATION**

Polish **EXCELLENT**

Symmetry **EXCELLENT**

Fluorescence **SLIGHT**

Inscription(s) **LG700545778**

Comments: This Laboratory Grown Diamond was created by Chemical Vapor Deposition (CVD) growth process. Indications of post-growth treatment.



**IGI**



April 24, 2025  
IGI Report No LG700545778  
**CUSHION BRILLIANT**  
6.95 X 5.42 X 3.58 MM  
1.07 CARAT  
FANCY PINK  
VS 2  
66.1%  
85%  
Medium to Slightly Thick (Faceted)  
Long Faceted  
EXCELLENT  
EXCELLENT  
SLIGHT  
IGI LG700545778  
Comments: This Laboratory Grown Diamond was created by Chemical Vapor Deposition (CVD) growth process. Indications of post-growth treatment.