



ELECTRONIC COPY

LG700538888
Report verification at igi.org



April 30, 2025

IGI Report Number **LG700538888**

Description **LABORATORY GROWN DIAMOND**

Shape and Cutting Style **CUT CORNERED
RECTANGULAR MODIFIED
BRILLIANT**

Measurements **16.43 X 10.44 X 6.84 MM**

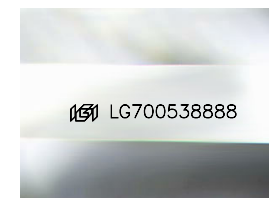
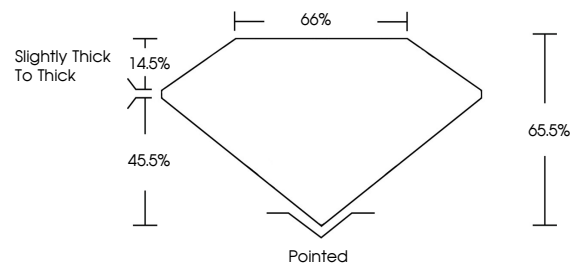
GRADING RESULTS

Carat Weight **10.53 CARATS**

Color Grade **E**

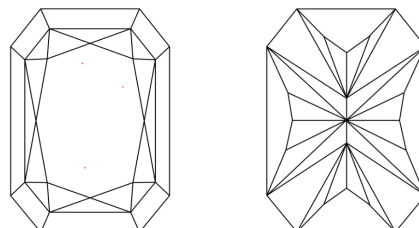
Clarity Grade **VVS 2**

PROPORTIONS



Sample Image Used

CLARITY CHARACTERISTICS



KEY TO SYMBOLS

Red symbols indicate internal characteristics.
Green symbols indicate external characteristics.

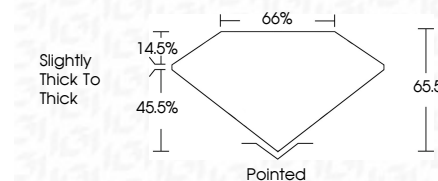
COLOR

D E F G H I J Faint Very Light Light

CLARITY

IF VS¹⁻² VS¹⁻² SI¹⁻² I¹⁻³

Internally Flawless Very Very Slightly Included Very Slightly Included Slightly Included Included



ADDITIONAL GRADING INFORMATION

Polish **EXCELLENT**

Symmetry **EXCELLENT**

Fluorescence **NONE**

Inscription(s) **IGI LG700538888**

Comments: This Laboratory Grown Diamond was created by Chemical Vapor Deposition (CVD) growth process. Type IIa



IGI



April 30, 2025	IGI Report No LG700538888	CUT CORNERED RECT. MODIFIED BRILLIANT	16.43 X 10.44 X 6.84 MM	10.53 CARATS	E	VVS 2	65.5%	65%	Slightly thick to thick	Pointed	EXCELLENT	EXCELLENT	NONE	IGI LG700538888
Polish	Symmetry	Fluorescence	Inscription(s)	Carat Weight	Color Grade	Clarity Grade	Table	Graile		Culet				
EXCELLENT	EXCELLENT	NONE	IGI LG700538888	10.53	E	VVS 2	65.5%	65%		Pointed	EXCELLENT	EXCELLENT	NONE	IGI LG700538888

Comments: This Laboratory Grown Diamond was created by Chemical Vapor Deposition (CVD) growth process. Type IIa