

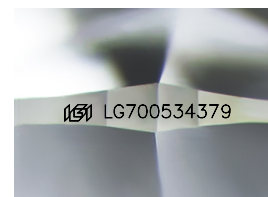
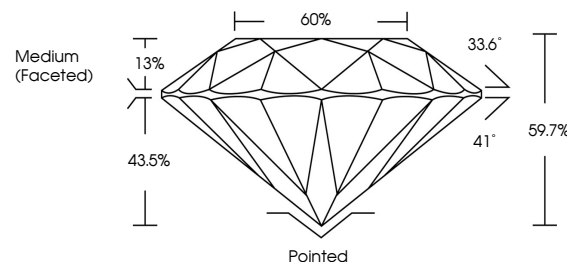


ELECTRONIC COPY

LABORATORY GROWN DIAMOND REPORT

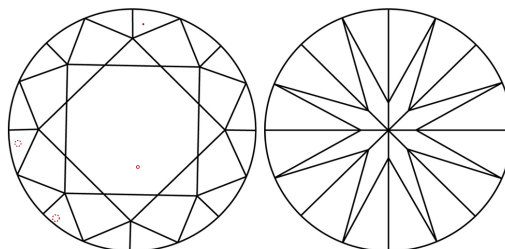
LG700534379
Report verification at [igi.org](https://www.igi.org)

PROPORTIONS



Sample Image Used

CLARITY CHARACTERISTICS



KEY TO SYMBOLS

Red symbols indicate internal characteristics.
Green symbols indicate external characteristics.

COLOR

D E F G H I J Faint Very Light Light

CLARITY

IF WS¹⁻² VS¹⁻² SI¹⁻² |¹⁻³

Internally Flawless	Very Very Slightly Included	Very Slightly Included	Slightly Included	Included
------------------------	--------------------------------	---------------------------	----------------------	----------

LABORATORY GROWN DIAMOND REPORT



April 18, 2025

IGI Report Number **LG700534379**Description **LABORATORY GROWN DIAMOND**Shape and Cutting Style **ROUND BRILLIANT**

Measurements 8.21 - 8.25 X 4.91 MM

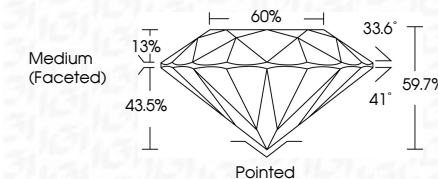
GRADING RESULTS

Carat Weight **2.02 CARATS**

Color Grade E

Clarity Grade VS 1

Cut Grade **IDEAL**



ADDITIONAL GRADING INFORMATION

Polish **EXCELLENT**Symmetry **EXCELLENT**Fluorescence **NONE**Inscription(s) LG700534379

Comments: This Laboratory Grown Diamond was created by Chemical Vapor Deposition (CVD) growth process.

Type IIa



April 18, 2026	Q1 Report No LG70534379	202 CARATS	Vs 1	IDEAL	59.7%	60%	Medium (Faceted)	Pointed	Quiet	Comments: Created by Crown Diamond vsp Graded by Crown Diamond vsp Created by Crown Diamond vsp Graded
----------------	-------------------------	------------	------	-------	-------	-----	------------------	---------	-------	---

