

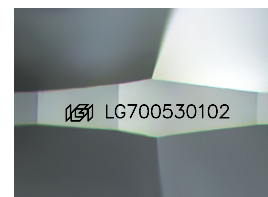
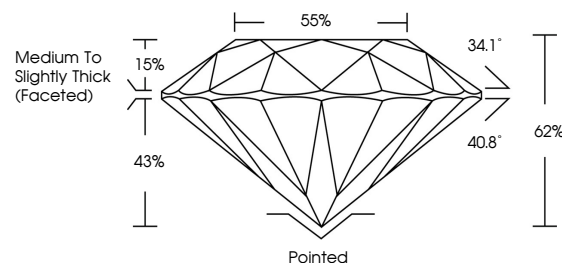


ELECTRONIC COPY

LABORATORY GROWN DIAMOND REPORT

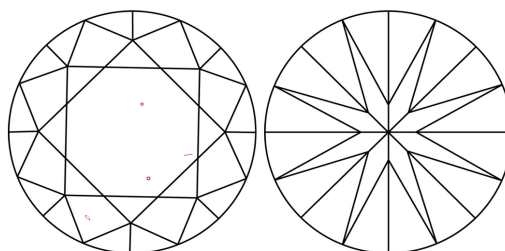
LG700530102
Report verification at igi.org

PROPORTIONS



Sample Image Used

CLARITY CHARACTERISTICS



KEY TO SYMBOLS

Red symbols indicate internal characteristics.
Green symbols indicate external characteristics.

COLOR

D E F G H I J Faint Very Light Light

CLARITY

IF WS¹⁻² VS¹⁻² SI¹⁻² |¹⁻³

Internally Flawless	Very Very Slightly Included	Very Slightly Included	Slightly Included	Included
------------------------	--------------------------------	---------------------------	----------------------	----------

LABORATORY GROWN DIAMOND REPORT



June 13, 2025

IGI Report Number LG700530102

Description **LABORATORY GROWN DIAMOND**Shape and Cutting Style **ROUND BRILLIANT**

Measurements 11.30 - 11.33 X 7.01 MM

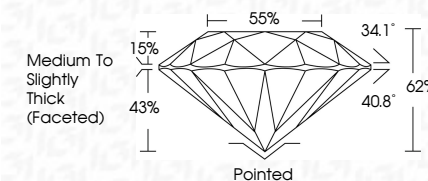
GRADING RESULTS

Carat Weight 5.51 CARATS

Color Grade F

Clarity Grade VS 1

Cut Grade **IDEAL**



ADDITIONAL GRADING INFORMATION

Polish **EXCELLENT**Symmetry **EXCELLENT**Fluorescence **NONE**Inscription(s)  LG700530102

Comments: This Laboratory Grown Diamond was created by Chemical Vapor Deposition (CVD) growth process.
Type IIa



© IGI 2020, International Gemological Institute

FD - 10 20

www.igi.org



THIS DOCUMENT WAS PRODUCED WITH THE FOLLOWING SECURITY MEASURES: SPECIAL DOCUMENT PAPER, INK SCREENS, WATERMARK, BACKGROUND DESIGNS, HOLOGRAM, AND OTHER SECURITY FEATURES NOT LISTED AND DO EXCEED DOCUMENT SECURITY INDUSTRY GUIDELINES.

June 19, 2026	G Report No LG70530102
ROUND BRILLIANT	5.61 CARATS
1.30 - 1.33 X 7.01 MM	F
Color Weight	VS 1
Color Grade	IDeal
Clarity Grade	Gr1
Cut Grade	Gr2
Depth	58%
Table	Medium to Slightly
Girdle	Culet (Faceted)
Symmetry	Poished
Fluorescence	EXCELLENT
Inscriptions(s)	EXCELLENT
	NONE
	I69 LG70530102
Comments:	The Laboratory Crown Diamond was found to be a Natural Ruby Deposition (CVD) growth process. Type Iia