



**ELECTRONIC COPY**

LG700527084  
Report verification at igi.org



April 25, 2025  
IGI Report Number **LG700527084**  
Description **LABORATORY GROWN DIAMOND**  
Shape and Cutting Style **ROUND CORNERED  
RECTANGULAR MODIFIED  
BRILLIANT**

Measurements **11.03 X 6.94 X 4.28 MM**

**GRADING RESULTS**

Carat Weight **3.02 CARATS**  
Color Grade **H**  
Clarity Grade **VS 1**

April 25, 2025  
IGI Report Number **LG700527084**  
Description **LABORATORY GROWN DIAMOND**  
Shape and Cutting Style **ROUND CORNERED  
RECTANGULAR MODIFIED  
BRILLIANT**  
Measurements **11.03 X 6.94 X 4.28 MM**

**GRADING RESULTS**

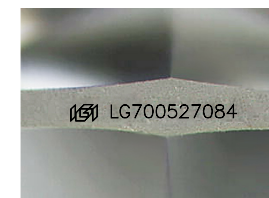
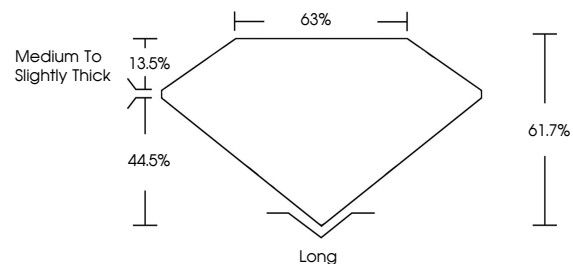
Carat Weight **3.02 CARATS**  
Color Grade **H**  
Clarity Grade **VS 1**

**ADDITIONAL GRADING INFORMATION**

Polish **EXCELLENT**  
Symmetry **EXCELLENT**  
Fluorescence **NONE**  
Inscription(s) **IGI LG700527084**

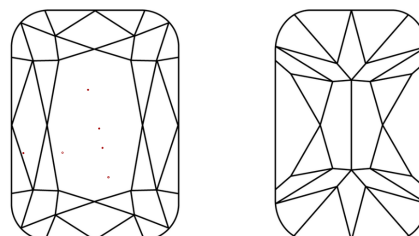
Comments: This Laboratory Grown Diamond was created by Chemical Vapor Deposition (CVD) growth process.  
Type IIa

**PROPORTIONS**



Sample Image Used

**CLARITY CHARACTERISTICS**



**KEY TO SYMBOLS**

Red symbols indicate internal characteristics.  
Green symbols indicate external characteristics.

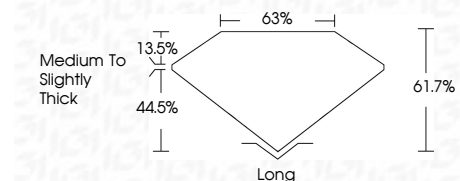
**COLOR**

D E F G H I J Faint Very Light Light

**CLARITY**

IF WS<sup>1-2</sup> VS<sup>1-2</sup> SI<sup>1-2</sup> I<sup>1-3</sup>

Internally Flawless Very Very Slightly Included Very Slightly Included Slightly Included Included



**ADDITIONAL GRADING INFORMATION**

Polish **EXCELLENT**  
Symmetry **EXCELLENT**  
Fluorescence **NONE**  
Inscription(s) **IGI LG700527084**  
Comments: This Laboratory Grown Diamond was created by Chemical Vapor Deposition (CVD) growth process.  
Type IIa



April 25, 2025  
IGI Report No LG700527084  
**ROUND CORNERED RECT. MODIFIED  
BRILLIANT**  
11.03 X 6.94 X 4.28 MM  
Carat Weight **3.02 CARATS**  
Color Grade **H**  
Clarity Grade **VS 1**  
Depth **61.7%**  
Table **63%**  
Girdle **Medium to Slightly Thick**  
Culet **Long**  
Polish **EXCELLENT**  
Symmetry **EXCELLENT**  
Fluorescence **NONE**  
Inscription(s) **IGI LG700527084**  
Comments: This Laboratory Grown Diamond was created by Chemical Vapor Deposition (CVD) growth process.  
Type IIa