



**ELECTRONIC COPY**

LG700518657  
Report verification at igi.org

**LABORATORY GROWN DIAMOND REPORT**

October 11, 2025  
IGI Report Number **LG700518657**  
Description **LABORATORY GROWN DIAMOND**  
Shape and Cutting Style **CUT CORNERED RECTANGULAR MODIFIED BRILLIANT**  
Measurements **8.93 X 6.47 X 4.51 MM**

**GRADING RESULTS**

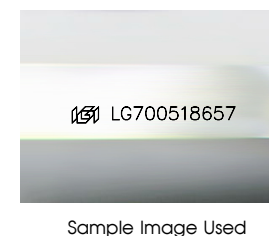
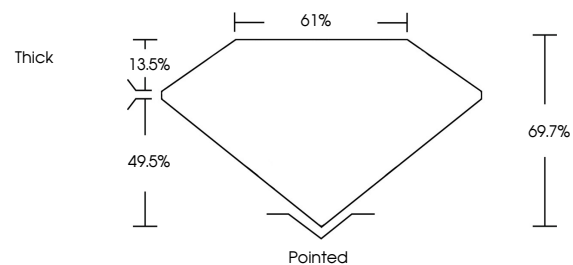
Carat Weight **2.56 CARATS**  
Color Grade **FANCY VIVID PINK**  
Clarity Grade **VVS 2**

**ADDITIONAL GRADING INFORMATION**

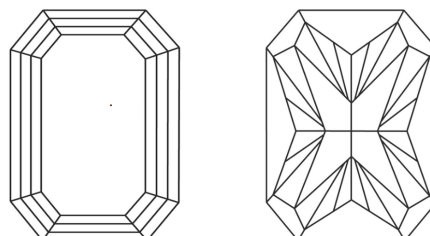
Polish **EXCELLENT**  
Symmetry **EXCELLENT**  
Fluorescence **NONE**  
Inscription(s) **IGI LG700518657**

Comments: This Laboratory Grown Diamond was created by Chemical Vapor Deposition (CVD) growth process. Indications of post-growth treatment.

**PROPORTIONS**



**CLARITY CHARACTERISTICS**



**KEY TO SYMBOLS**

Red symbols indicate internal characteristics.  
Green symbols indicate external characteristics.

**COLOR**

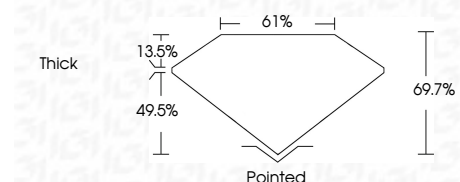
D E F G H I J Faint Very Light Light

**CLARITY**

FL	IF	VVS <sup>1-2</sup>	VS <sup>1-2</sup>	SI <sup>1-2</sup>	I <sup>1-3</sup>
Flawless	Internally Flawless	Very Very Slightly Included	Very Slightly Included	Slightly Included	Included



October 11, 2025  
IGI Report Number **LG700518657**  
Description **LABORATORY GROWN DIAMOND**  
Shape and Cutting Style **CUT CORNERED RECTANGULAR MODIFIED BRILLIANT**  
Measurements **8.93 X 6.47 X 4.51 MM**  
**GRADING RESULTS**  
Carat Weight **2.56 CARATS**  
Color Grade **FANCY VIVID PINK**  
Clarity Grade **VVS 2**



**ADDITIONAL GRADING INFORMATION**

Polish **EXCELLENT**  
Symmetry **EXCELLENT**  
Fluorescence **NONE**  
Inscription(s) **IGI LG700518657**  
Comments: This Laboratory Grown Diamond was created by Chemical Vapor Deposition (CVD) growth process. Indications of post-growth treatment.



October 11, 2025  
IGI Report No LG700518657  
CUT CORNERED RECT. MODIFIED BRILLIANT  
8.93 X 6.47 X 4.51 MM  
2.56 CARATS  
FANCY VIVID PINK  
VVS 2  
69.7%  
61%  
Thick  
Pointed  
EXCELLENT  
EXCELLENT  
NONE  
IGI LG700518657

Comments: This Laboratory Grown Diamond was created by Chemical Vapor Deposition (CVD) growth process. Indications of post-growth treatment.