



**ELECTRONIC COPY**

LG700518437  
Report verification at [igi.org](http://igi.org)



October 3, 2025  
IGI Report Number **LG700518437**  
Description **LABORATORY GROWN DIAMOND**  
Shape and Cutting Style **SQUARE CUSHION MODIFIED BRILLIANT**  
Measurements **6.73 X 6.63 X 4.30 MM**  
**GRADING RESULTS**  
Carat Weight **1.81 CARAT**  
Color Grade **FANCY INTENSE BLUE**  
Clarity Grade **VVS 1**

**LABORATORY GROWN DIAMOND REPORT**

October 3, 2025  
IGI Report Number **LG700518437**  
Description **LABORATORY GROWN DIAMOND**  
Shape and Cutting Style **SQUARE CUSHION MODIFIED BRILLIANT**  
Measurements **6.73 X 6.63 X 4.30 MM**

**GRADING RESULTS**

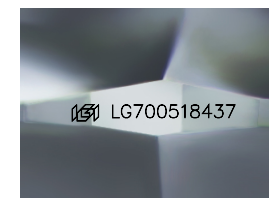
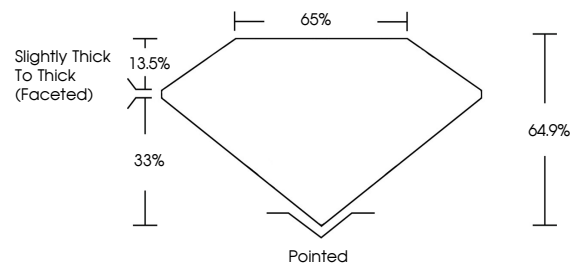
Carat Weight **1.81 CARAT**  
Color Grade **FANCY INTENSE BLUE**  
Clarity Grade **VVS 1**

**ADDITIONAL GRADING INFORMATION**

Polish **EXCELLENT**  
Symmetry **EXCELLENT**  
Fluorescence **NONE**  
Inscription(s) **IGI LG700518437**

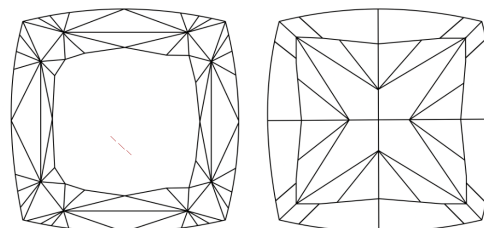
Comments: As Grown - No indication of post-growth treatment.  
This Laboratory Grown Diamond was created by High Pressure High Temperature (HPHT) growth process.

**PROPORTIONS**



Sample Image Used

**CLARITY CHARACTERISTICS**



**KEY TO SYMBOLS**

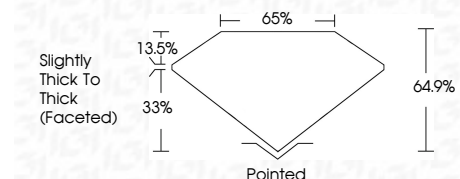
Red symbols indicate internal characteristics.  
Green symbols indicate external characteristics.

**COLOR**

D E F G H I J Faint Very Light Light

**CLARITY**

FL	IF	VVS <sup>1-2</sup>	VS <sup>1-2</sup>	SI <sup>1-2</sup>	I <sup>1-3</sup>
Flawless	Internally Flawless	Very Very Slightly Included	Very Slightly Included	Slightly Included	Included



**ADDITIONAL GRADING INFORMATION**

Polish **EXCELLENT**  
Symmetry **EXCELLENT**  
Fluorescence **NONE**  
Inscription(s) **IGI LG700518437**  
Comments: As Grown - No indication of post-growth treatment.  
This Laboratory Grown Diamond was created by High Pressure High Temperature (HPHT) growth process.



**IGI**



October 3, 2025  
IGI Report No **LG700518437**  
**SQUARE CUSHION MODIFIED BRILLIANT**  
**6.73 X 6.63 X 4.30 MM**  
Carat Weight **1.81 CARAT**  
Color Grade **FANCY INTENSE BLUE**  
Clarity Grade **VVS 1**  
Depth **64.9%**  
Table **33%**  
Girdle **Slightly Thick To Thick (Faceted)**  
Culet **Pointed**  
Polish **EXCELLENT**  
Symmetry **EXCELLENT**  
Fluorescence **NONE**  
Inscription(s) **IGI LG700518437**

Comments: As Grown - No indication of post-growth treatment.  
This Laboratory Grown Diamond was created by High Pressure High Temperature (HPHT) growth process.