

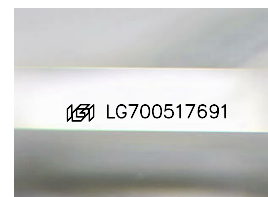
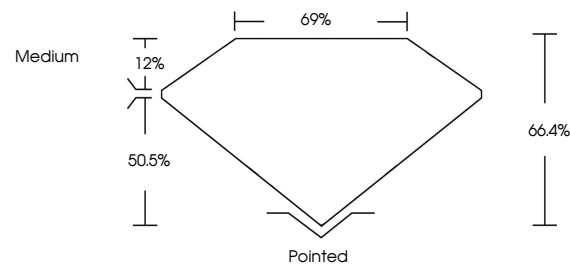


ELECTRONIC COPY

LABORATORY GROWN DIAMOND REPORT

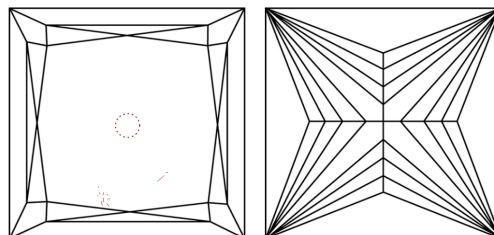
LG700517691
Report verification at igi.org

PROPORTIONS



Sample Image Used

CLARITY CHARACTERISTICS



KEY TO SYMBOLS

Red symbols indicate internal characteristics.
Green symbols indicate external characteristics.

COLOR

D E F G H I J Faint Very Light Light

CLARITY

IF	VS ¹⁻²	VS ¹⁻²	SI ¹⁻²	I ¹⁻³
Internally Flawless	Very Very Slightly Included	Very Slightly Included	Slightly Included	Included

LABORATORY GROWN DIAMOND REPORT



July 7, 2025

IGI Report Number **LG700517691**Description **LABORATORY GROWN DIAMOND**Shape and Cutting Style **PRINCESS CUT**

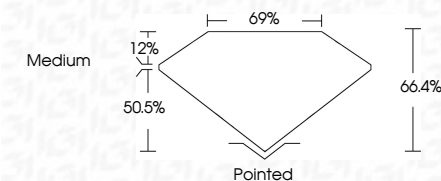
Measurements 5.95 X 5.81 X 3.86 MM

GRADING RESULTS

Carat Weight 1.18 CARAT

Color Grade **FANCY INTENSE BLUE**

Clarity Grade VS 1



ADDITIONAL GRADING INFORMATION

Polish **EXCELLENT**Symmetry **VERY GOOD**Fluorescence **NONE**Inscription(s)  LG700517691

Comments: This Laboratory Grown Diamond was created by High Pressure High Temperature (HPHT) growth process.

Indications of post-growth treatment.



© IGI 2020, International Gemological Institute

FD - 10 20

www.igi.org

THIS DOCUMENT WAS PRODUCED WITH THE FOLLOWING SECURITY MEASURES: SPECIAL DOCUMENT PAPER, INK SCREENS, WATERMARK, BACKGROUND DESIGNS, HOLOGRAM AND OTHER SECURITY FEATURES NOT LISTED AND DO EXCEED DOCUMENT SECURITY INDUSTRY GUIDELINE

July 7, 2025
 IGI Report No LG700517691
 PRINCESS CIT

1.18 CARAT	VS 1	Polished
FANCY INTENSE BLUE	66.4%	EXCELLENT
	69%	VERY GOOD
	Medium	NONE
		Fluorescence

Comments:
This Laboratory Grown Diamond was created by High Pressure High Temperature (HPHT) growth process.