



ELECTRONIC COPY

LG700517290
Report verification at igi.org



June 5, 2025
IGI Report Number **LG700517290**
Description **LABORATORY GROWN DIAMOND**
Shape and Cutting Style **SQUARE CUSHION MODIFIED BRILLIANT**
Measurements **6.36 X 6.09 X 4.22 MM**
GRADING RESULTS
Carat Weight **1.62 CARAT**
Color Grade **FANCY VIVID YELLOW**
Clarity Grade **VVS 2**

LABORATORY GROWN DIAMOND REPORT

June 5, 2025
IGI Report Number **LG700517290**
Description **LABORATORY GROWN DIAMOND**
Shape and Cutting Style **SQUARE CUSHION MODIFIED BRILLIANT**
Measurements **6.36 X 6.09 X 4.22 MM**

GRADING RESULTS

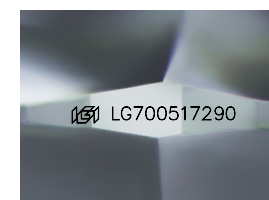
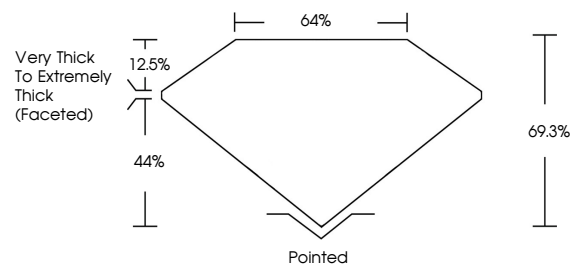
Carat Weight **1.62 CARAT**
Color Grade **FANCY VIVID YELLOW**
Clarity Grade **VVS 2**

ADDITIONAL GRADING INFORMATION

Polish **EXCELLENT**
Symmetry **EXCELLENT**
Fluorescence **NONE**
Inscription(s) **IGI LG700517290**

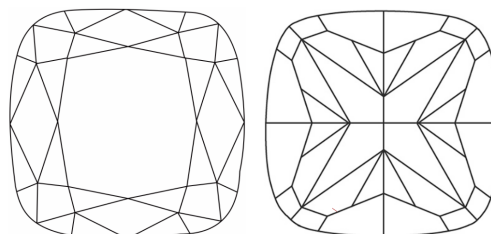
Comments: This Laboratory Grown Diamond was created by High Pressure High Temperature (HPHT) growth process.
Indications of post-growth treatment.

PROPORTIONS



Sample Image Used

CLARITY CHARACTERISTICS



KEY TO SYMBOLS

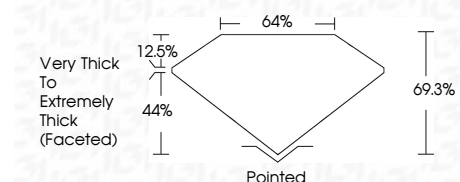
Red symbols indicate internal characteristics.
Green symbols indicate external characteristics.

COLOR

D E F G H I J Faint Very Light Light

CLARITY

IF	VS ¹⁻²	VS ¹⁻²	SI ¹⁻²	I ¹⁻³
Internally Flawless	Very Very Slightly Included	Very Slightly Included	Slightly Included	Included



ADDITIONAL GRADING INFORMATION

Polish **EXCELLENT**
Symmetry **EXCELLENT**
Fluorescence **NONE**
Inscription(s) **IGI LG700517290**
Comments: This Laboratory Grown Diamond was created by High Pressure High Temperature (HPHT) growth process.
Indications of post-growth treatment.



June 5, 2025
IGI Report No LG700517290
SQUARE CUSHION MODIFIED BRILLIANT
6.36 X 6.09 X 4.22 MM
1.62 CARAT
FANCY VIVID YELLOW
VVS 2
69.3%
44%
12.5%
Very Thick to Extremely Thick (Faceted)
Pointed
EXCELLENT
EXCELLENT
NONE
IGI LG700517290
Comments: This Laboratory Grown Diamond was created by High Pressure High Temperature (HPHT) growth process.
Indications of post-growth treatment.