



ELECTRONIC COPY

LG700517267
Report verification at igi.org



June 4, 2025
IGI Report Number **LG700517267**
Description **LABORATORY GROWN DIAMOND**
Shape and Cutting Style **CUSHION MODIFIED BRILLIANT**
Measurements **9.30 X 6.18 X 3.76 MM**
GRADING RESULTS
Carat Weight **1.84 CARAT**
Color Grade **FANCY VIVID YELLOW**
Clarity Grade **VS 2**

LABORATORY GROWN DIAMOND REPORT

June 4, 2025
IGI Report Number **LG700517267**
Description **LABORATORY GROWN DIAMOND**
Shape and Cutting Style **CUSHION MODIFIED BRILLIANT**
Measurements **9.30 X 6.18 X 3.76 MM**

GRADING RESULTS

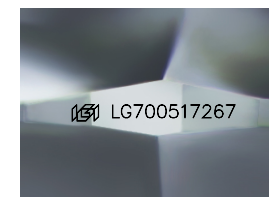
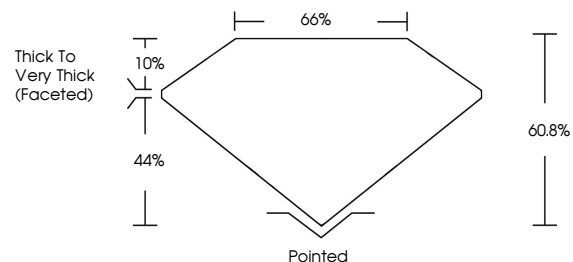
Carat Weight **1.84 CARAT**
Color Grade **FANCY VIVID YELLOW**
Clarity Grade **VS 2**

ADDITIONAL GRADING INFORMATION

Polish **VERY GOOD**
Symmetry **VERY GOOD**
Fluorescence **NONE**
Inscription(s) **IGI LG700517267**

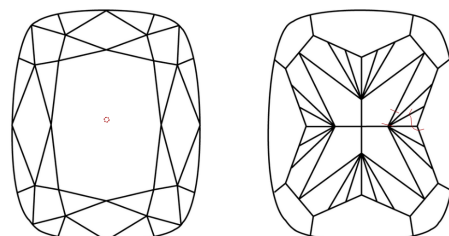
Comments: This Laboratory Grown Diamond was created by High Pressure High Temperature (HPHT) growth process. Indications of post-growth treatment.

PROPORTIONS



Sample Image Used

CLARITY CHARACTERISTICS



KEY TO SYMBOLS

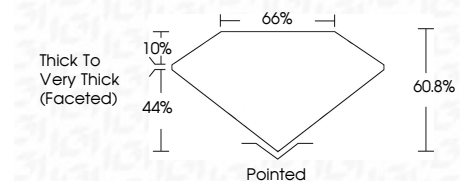
Red symbols indicate internal characteristics.
Green symbols indicate external characteristics.

COLOR

D E F G H I J Faint Very Light Light

CLARITY

IF	VS ¹⁻²	VS ¹⁻²	SI ¹⁻²	I ¹⁻³
Internally Flawless	Very Very Slightly Included	Very Slightly Included	Slightly Included	Included



ADDITIONAL GRADING INFORMATION

Polish **VERY GOOD**
Symmetry **VERY GOOD**
Fluorescence **NONE**
Inscription(s) **IGI LG700517267**
Comments: This Laboratory Grown Diamond was created by High Pressure High Temperature (HPHT) growth process. Indications of post-growth treatment.



IGI



June 4, 2025
IGI Report No **LG700517267**
CUSHION MODIFIED BRILLIANT
9.30 X 6.18 X 3.76 MM
1.84 CARAT
FANCY VIVID YELLOW
VS 2
60.8%
66%
Thick to Very Thick (Faceted)
Pointed
Polish **VERY GOOD**
Symmetry **VERY GOOD**
Fluorescence **NONE**
Inscription(s) **IGI LG700517267**

Comments: This Laboratory Grown Diamond was created by High Pressure High Temperature (HPHT) growth process. Indications of post-growth treatment.