



ELECTRONIC COPY

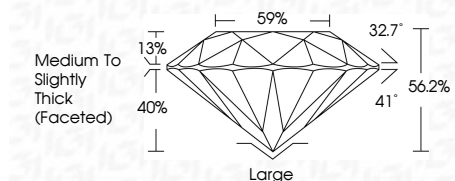
LG700517135
Report verification at igi.org



May 27, 2025
IGI Report Number **LG700517135**
Description **LABORATORY GROWN DIAMOND**
Shape and Cutting Style **ROUND BRILLIANT**
Measurements **8.51 - 8.54 X 4.79 MM**

GRADING RESULTS

Carat Weight **2.23 CARATS**
Color Grade **W-X**
Clarity Grade **VVS 2**
Cut Grade **FAIR**

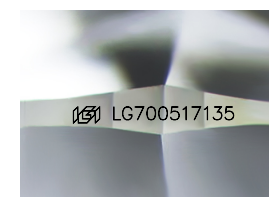


ADDITIONAL GRADING INFORMATION

Polish **EXCELLENT**
Symmetry **EXCELLENT**
Fluorescence **NONE**
Inscription(s) **IGI LG700517135**
Comments: This Laboratory Grown Diamond was created by Chemical Vapor Deposition (CVD) growth process.
Indications of post-growth treatment: Light Brown

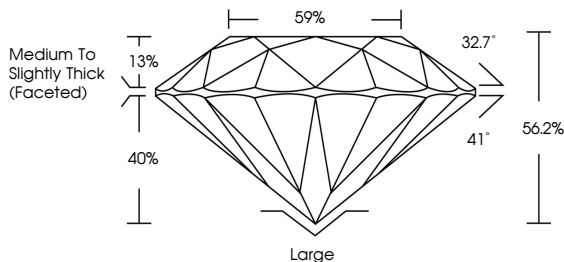


May 27, 2025
IGI Report No LG700517135
ROUND BRILLIANT
8.51 - 8.54 X 4.79 MM
2.23 CARATS
W-X
VVS 2
FAIR
66.2%
59%
Medium To Slightly Thick (Faceted)
Large
EXCELLENT
EXCELLENT
NONE
IGI LG700517135
Comments: This Laboratory Grown Diamond was created by Chemical Vapor Deposition (CVD) growth process.
Indications of post-growth treatment: Light Brown

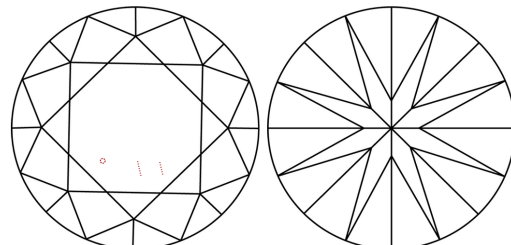


Sample Image Used

PROPORTIONS



CLARITY CHARACTERISTICS



KEY TO SYMBOLS

Red symbols indicate internal characteristics.
Green symbols indicate external characteristics.

COLOR

D	E	F	G	H	I	J	Faint	Very Light	Light
---	---	---	---	---	---	---	-------	------------	-------

CLARITY

IF	VS ¹⁻²	VS ¹⁻²	SI ¹⁻²	I ¹⁻³
Internally Flawless	Very Very Slightly Included	Very Slightly Included	Slightly Included	Included

